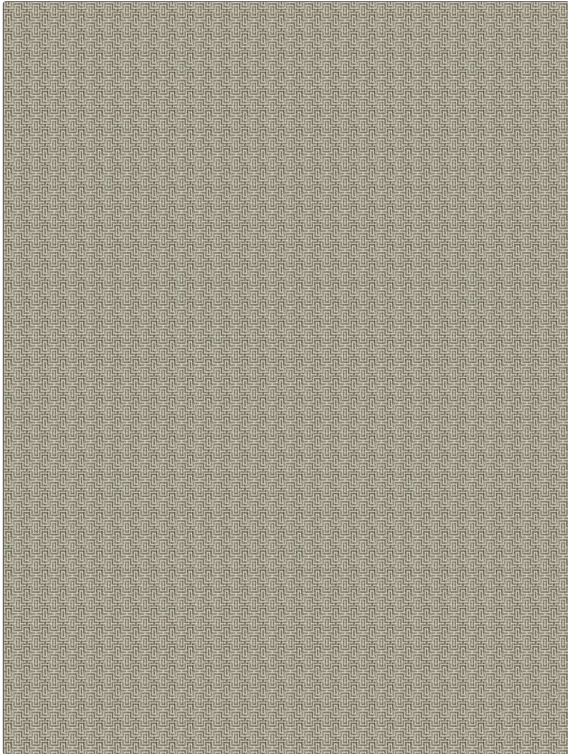


PATTERN Corzo
COLOR Driftwood

BRAND	APPLICATION
Fabricut	Fabric
CATEGORIES	BOOK
Wovens	Natural Layers (3 Books) Driftwood
COLORS	DESIGN TYPES
Taupe / Tan	Lattice / Fretwork, Small Scale Woven
SCALE	DIRECTION SHOWN
Small	Up the Bolt



WIDTH	VERTICAL REPEAT	HORIZONTAL REPEAT	CONTENT
55.00 in (139.70 cm)	0.87 in (2.21 cm)	0.87 in (2.21 cm)	72% Polyester, 14% Cotton, 7% Viscose, 7% Linen
BACKING	FIRE CODES	DOUBLE RUBS	PRODUCT NUMBER
	UFAC Class I	Exceeds 15,000 Double Rubs (Wyzenbeek Method)	1233703
DATE BOOKED	COUNTRY	CLEANING CODES	
02/2020	India	S	

ADDITIONAL PRODUCT NOTES

Ca Tb 117-2013