

PATTERN **Gauri**
COLOR **Citrus**

BRAND

Fabricut

APPLICATION

Fabric

USES

**Bedding, Drapery,
Multipurpose**

CATEGORIES

Crewels / Embroideries

BOOK

**Natural Layers (3 Books)
Dew**

COLORS

Green, Light Green

DESIGN TYPES

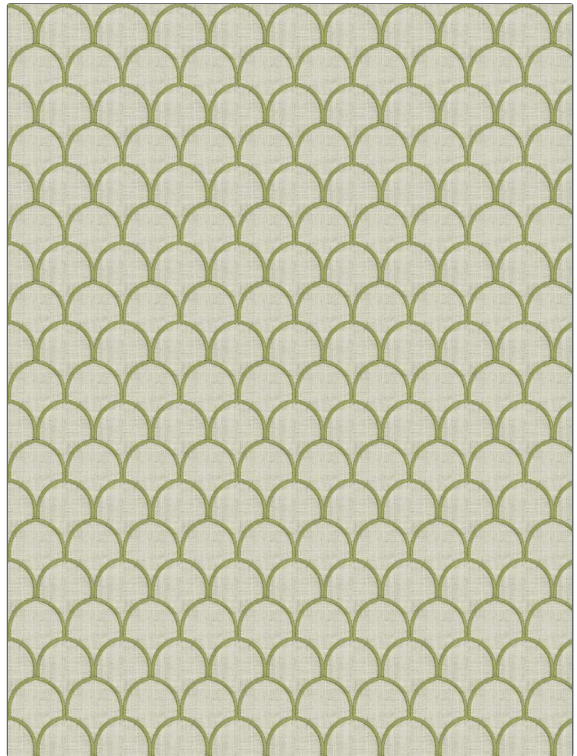
Embroidery, Bargello

SCALE

Small

DIRECTION SHOWN

Up the Bolt



WIDTH

54.00 in (137.16 cm)

VERTICAL REPEAT

3.87 in (9.83 cm)

HORIZONTAL REPEAT

2.75 in (6.98 cm)

CONTENT

**Embroidery: 100% Rayon,
Base: 95% Polyester, 5%
Linen**

BACKING

PRODUCT NUMBER

1252804

DATE BOOKED

02/2020

COUNTRY

China

CLEANING CODES

S

ADDITIONAL PRODUCT NOTES

Embroidered Textiles Are Not, Guaranteed For Precise Color, Matching And Colorfastness., Color Placement Of Embroidery, May Vary. All Measurements, Quoted For Repeats Are, Approximate.