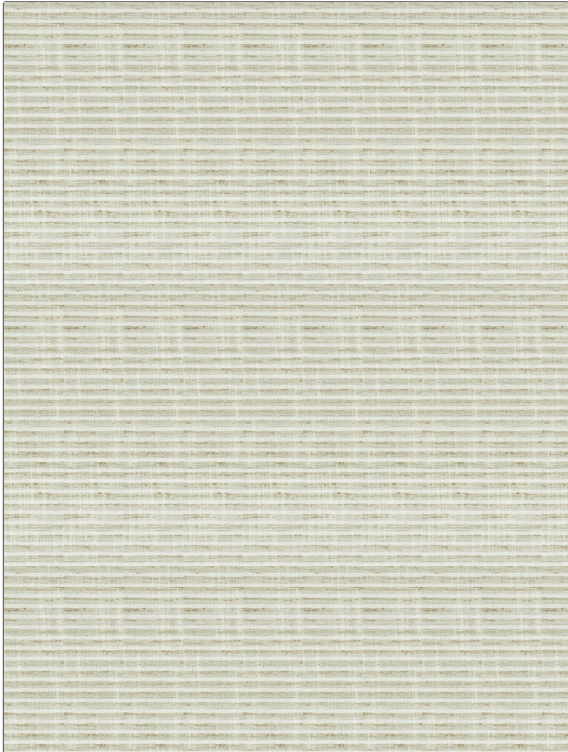


PATTERN	Shadi Stripe
COLOR	Taupe
BRAND	APPLICATION
Fabricut	Fabric
USES	CATEGORIES
Bedding, Drapery, Multipurpose	Wovens
BOOK	COLORS
Natural Layers (3 Books) Driftwood	Grey, Taupe / Tan, Linen
DESIGN TYPES	SCALE
Stripes	Small
RAILOADED	
Not Railroaded	



WIDTH	VERTICAL REPEAT	HORIZONTAL REPEAT	CONTENT
54.00 in (137.16 cm)	13.50 in (34.29 cm)	0.00 in (0.00 cm)	100% Polyester
BACKING	FIRE CODES	DOUBLE RUBS	PRODUCT NUMBER
	UFAC Class I	Exceeds 50,000 Double Rubs (Wyzenbeek Method)	1253403
DATE BOOKED	COUNTRY	CLEANING CODES	
02/2020	India	S	

ADDITIONAL PRODUCT NOTES
Ca Tb 117-2013