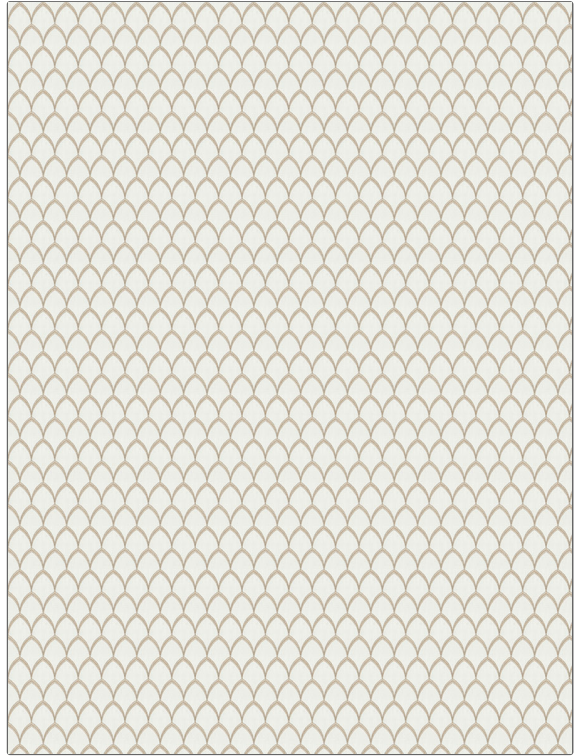


**PATTERN** Parthy  
**COLOR** Fawn

<b>BRAND</b>	<b>APPLICATION</b>
Fabricut	Fabric
<b>USES</b>	<b>CATEGORIES</b>
Bedding, Drapery	Crewels / Embroideries
<b>BOOK</b>	<b>COLORS</b>
Natural Layers (3 Books) Driftwood	Taupe / Tan, Off White / Ivory
<b>DESIGN TYPES</b>	<b>SCALE</b>
Embroidery, Lattice / Fretwork, Contemporary / Modern	Medium
<b>DIRECTION SHOWN</b>	
Up the Bolt	



<b>WIDTH</b>	<b>VERTICAL REPEAT</b>	<b>HORIZONTAL REPEAT</b>	<b>CONTENT</b>
51.00 in (129.54 cm)	3.00 in (7.62 cm)	1.12 in (2.84 cm)	Embroidery: 100% Polyester, Base: 52% Polyester, 48% Cotton
<b>BACKING</b>	<b>PRODUCT NUMBER</b>	<b>DATE BOOKED</b>	<b>COUNTRY</b>
	1263403	02/2020	India
<b>CLEANING CODES</b>			
S			

**ADDITIONAL PRODUCT NOTES**

Exclusive Pattern, Embroidered Textiles Are Not, Guaranteed For Precise Color, Matching And Colorfastness., Color Placement Of Embroidery, May Vary. All Measurements, Quoted For Repeats Are, Approximate.