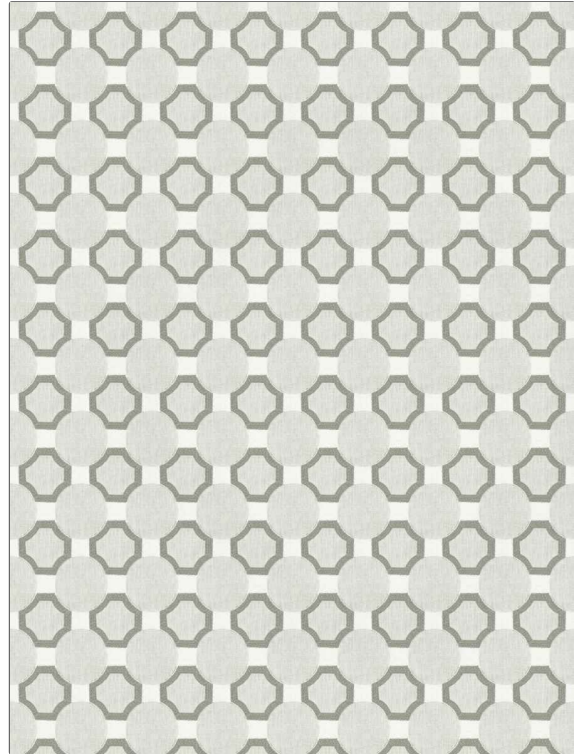


<b>PATTERN</b>	<b>Cilla</b>
<b>COLOR</b>	<b>Driftwood</b>
<b>BRAND</b>	<b>APPLICATION</b>
<b>Fabricut</b>	<b>Fabric</b>
<b>USES</b>	<b>CATEGORIES</b>
<b>Bedding, Drapery</b>	<b>Crewels / Embroideries</b>
<b>BOOK</b>	<b>COLORS</b>
<b>Natural Nuances (5 Books) Driftwood</b>	<b>Grey, Linen</b>
<b>DESIGN TYPES</b>	<b>SCALE</b>
<b>Geometric, Lattice / Fretwork, Crewel</b>	<b>Medium</b>
<b>DIRECTION SHOWN</b>	
<b>Up the Bolt</b>	



<b>WIDTH</b>	<b>VERTICAL REPEAT</b>	<b>HORIZONTAL REPEAT</b>	<b>CONTENT</b>
<b>54.00 in (137.16 cm)</b>	<b>4.75 in (12.06 cm)</b>	<b>3.38 in (8.59 cm)</b>	<b>Embroidery: 100% Cotton, Base: 52% Polyester, 48% Cotton</b>
<b>BACKING</b>	<b>FIRE CODES</b>	<b>PRODUCT NUMBER</b>	<b>DATE BOOKED</b>
	<b>Does Not Contain FR Chemicals, UFAC Class I / NFPA 260</b>	<b>1445602</b>	<b>01/2024</b>
<b>COUNTRY</b>	<b>CLEANING CODES</b>		
<b>India</b>	<b>S</b>		

**ADDITIONAL PRODUCT NOTES**

**Ca Tb 117-2013, Embroidered Textiles Are Not, Guaranteed For Precise Color, Matching And Colorfastness., Color Placement Of Embroidery, May Vary. All Measurements, Quoted For Repeats Are, Approximate.**