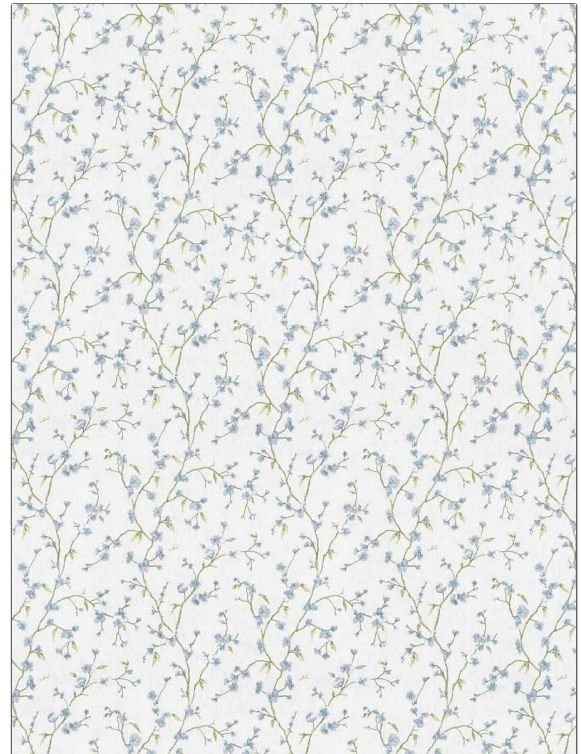


**PATTERN** Whimbrel  
**COLOR** 03

<b>BRAND</b>	<b>APPLICATION</b>
<b>Fabricut</b>	<b>Fabric</b>
<b>USES</b>	<b>CATEGORIES</b>
<b>Bedding, Drapery</b>	<b>Crewels / Embroideries</b>
<b>COLORS</b>	<b>DESIGN TYPES</b>
<b>Light Blue</b>	<b>Embroidery, Floral, Asian</b>
<b>SCALE</b>	<b>DIRECTION SHOWN</b>
<b>Medium</b>	<b>Up the Bolt</b>



<b>WIDTH</b>	<b>VERTICAL REPEAT</b>	<b>HORIZONTAL REPEAT</b>	<b>CONTENT</b>
50.00 in (127.00 cm)	25.00 in (63.50 cm)	24.75 in (62.86 cm)	<b>Embroidery: 100% Rayon, Base: 69% Cotton, 31% Polyester</b>
<b>BACKING</b>	<b>FIRE CODES</b>	<b>PRODUCT NUMBER</b>	<b>COUNTRY</b>
	<b>Does Not Contain FR Chemicals, UFAC Class I / NFPA 260</b>	<b>1446303</b>	<b>India</b>
<b>CLEANING CODES</b>			
<b>S</b>			

**ADDITIONAL PRODUCT NOTES**

Ca Tb 117-2013, Embroidered Textiles Are Not, Guaranteed For Precise Color, Matching And Colorfastness., Color Placement Of Embroidery, May Vary. All Measurements, Quoted For Repeats Are, Approximate.