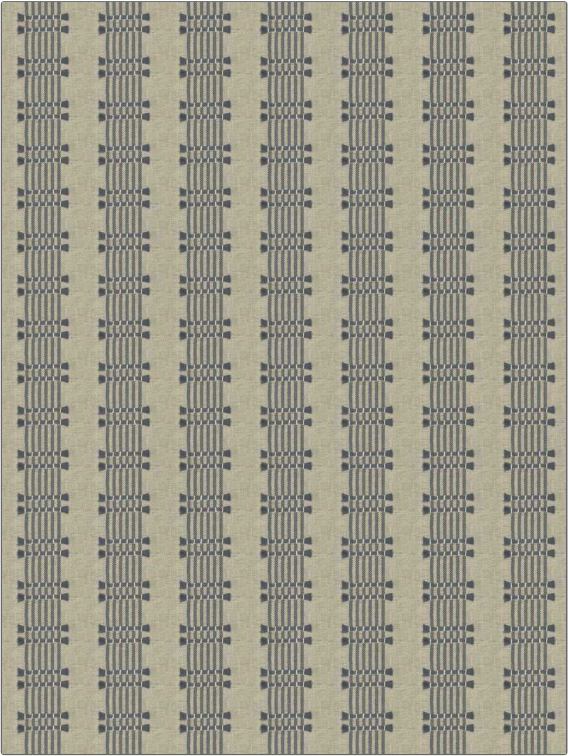


PATTERN	Loxley
COLOR	Chambray
BRAND	APPLICATION
Fabricut	Fabric
USES	CATEGORIES
Bedding, Drapery	Wovens, Crewels / Embroideries
BOOK	COLORS
Natural Nuances (5 Books) Chambray	Blue, Navy
DESIGN TYPES	SCALE
Embroidery, Stripes	Medium
DIRECTION SHOWN	
Up the Bolt	



WIDTH	VERTICAL REPEAT	HORIZONTAL REPEAT	CONTENT
54.00 in (137.16 cm)	2.13 in (5.41 cm)	3.88 in (9.86 cm)	Embroidery: 100% Cotton, Base: 81% Cotton, 19% Polyester
BACKING	FIRE CODES	PRODUCT NUMBER	DATE BOOKED
	Does Not Contain FR Chemicals, UFAC Class I / NFPA 260	1446501	01/2024
COUNTRY	CLEANING CODES		
India	S		

ADDITIONAL PRODUCT NOTES
Ca Tb 117-2013, Embroidered Textiles Are Not, Guaranteed For Precise Color, Matching And Colorfastness., Color Placement Of Embroidery, May Vary. All Measurements, Quoted For Repeats Are, Approximate.