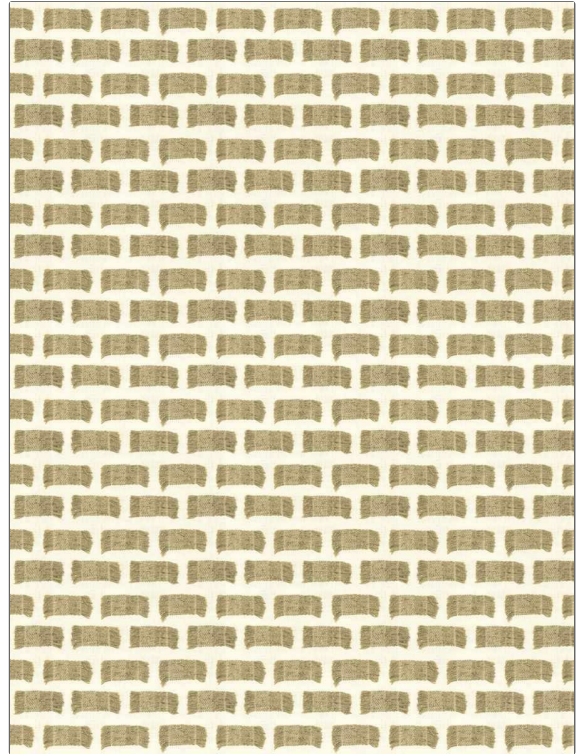


| | |
|---|--|
| PATTERN | Dulcie |
| COLOR | Natural |
| BRAND | APPLICATION |
| Fabricut | Fabric |
| USES | CATEGORIES |
| Bedding, Drapery, Multipurpose | Wovens, Solids / Small Scale Patterns |
| BOOK | COLORS |
| Natural Nuances (5 Books) Harvest | Linen |
| DESIGN TYPES | SCALE |
| Small Scale Woven, Contemporary / Modern | Small |
| DIRECTION SHOWN | |
| Up the Bolt | |



| | | | |
|-----------------------------|--|--|----------------------------------|
| WIDTH | VERTICAL REPEAT | HORIZONTAL REPEAT | CONTENT |
| 55.00 in (139.70 cm) | 2.95 in (7.49 cm) | 2.76 in (7.01 cm) | 52% Cotton, 48% Polyester |
| BACKING | FIRE CODES | DOUBLE RUBS | PRODUCT NUMBER |
| | UFAC Class I, Does Not Contain FR Chemicals | Exceeds 30,000 Double Rubs (Wyzenbeek Method) | 1447801 |
| DATE BOOKED | COUNTRY | CLEANING CODES | |
| 01/2024 | India | S | |

| |
|---------------------------------|
| ADDITIONAL PRODUCT NOTES |
| Ca Tb 117-2013 |