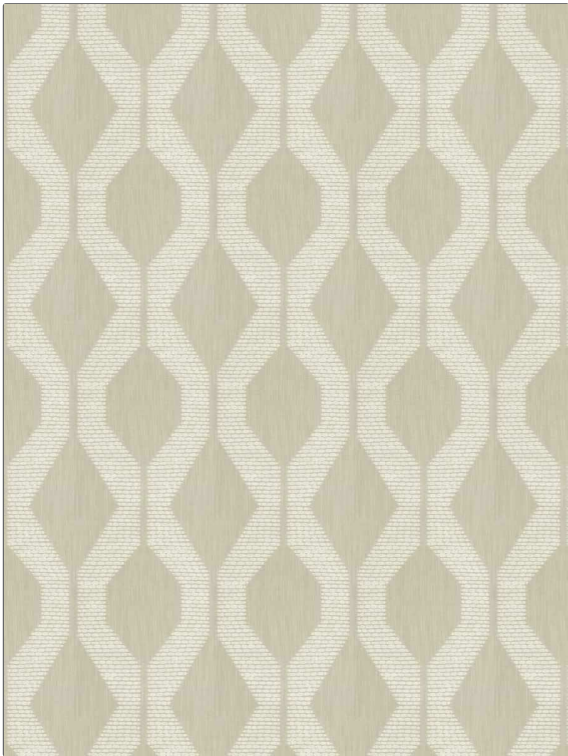


<b>PATTERN</b>	<b>Axil</b>
<b>COLOR</b>	<b>Natural</b>
<b>BRAND</b>	<b>APPLICATION</b>
<b>Fabricut</b>	<b>Fabric</b>
<b>USES</b>	<b>CATEGORIES</b>
<b>Bedding, Drapery</b>	<b>Wovens</b>
<b>BOOK</b>	<b>COLORS</b>
<b>Natural Nuances (5 Books) Driftwood</b>	<b>Beige</b>
<b>DESIGN TYPES</b>	<b>SCALE</b>
<b>Lattice / Fretwork, Ogee</b>	<b>Large</b>
<b>DIRECTION SHOWN</b>	
<b>Up the Bolt</b>	



<b>WIDTH</b>	<b>VERTICAL REPEAT</b>	<b>HORIZONTAL REPEAT</b>	<b>CONTENT</b>
<b>54.00 in (137.16 cm)</b>	<b>9.60 in (24.38 cm)</b>	<b>6.70 in (17.02 cm)</b>	<b>100% Cotton</b>
<b>BACKING</b>	<b>FIRE CODES</b>	<b>DOUBLE RUBS</b>	<b>PRODUCT NUMBER</b>
	<b>UFAC Class I, Does Not Contain FR Chemicals</b>	<b>Exceeds 8,000 Double Rubs (Wyzenbeek Method)</b>	<b>1448603</b>
<b>DATE BOOKED</b>	<b>COUNTRY</b>	<b>CLEANING CODES</b>	
<b>01/2024</b>	<b>India</b>	<b>S</b>	

<b>ADDITIONAL PRODUCT NOTES</b>
<b>Ca Tb 117-2013</b>