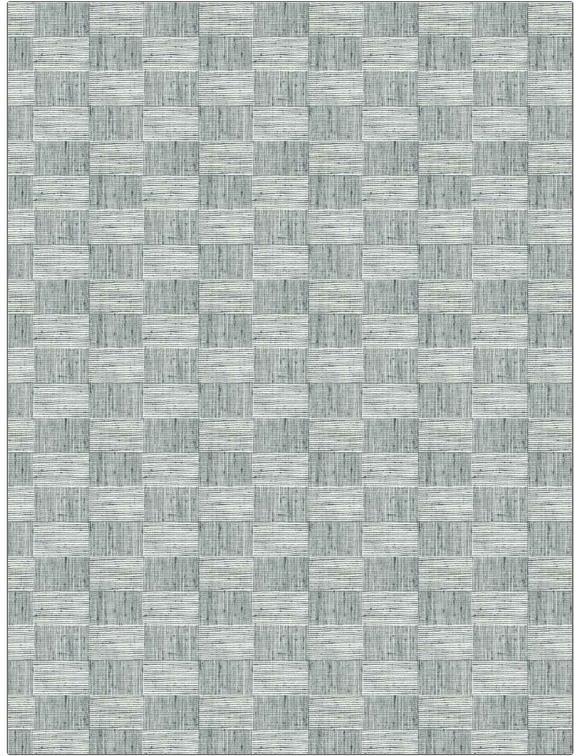


**PATTERN** Finneas  
**COLOR** Chambray

<b>BRAND</b>	<b>APPLICATION</b>
Fabricut	Fabric
<b>USES</b>	<b>CATEGORIES</b>
Bedding, Drapery, Multipurpose, Upholstery	Wovens
<b>BOOK</b>	<b>COLORS</b>
Natural Nuances (5 Books) Chambray	Blue
<b>DESIGN TYPES</b>	<b>SCALE</b>
Geometric, Small Scale Woven, Contemporary / Modern	Medium
<b>RAILROADED</b>	
Not Railroaded	



<b>WIDTH</b>	<b>VERTICAL REPEAT</b>	<b>HORIZONTAL REPEAT</b>	<b>CONTENT</b>
54.00 in (137.16 cm)	3.18 in (8.08 cm)	5.25 in (13.34 cm)	62% Polyester, 38% Cotton
<b>BACKING</b>	<b>FIRE CODES</b>	<b>DOUBLE RUBS</b>	<b>PRODUCT NUMBER</b>
	UFAC Class I	Exceeds 51,000 Double Rubs (Wyzenbeek Method)	1467104
<b>DATE BOOKED</b>	<b>COUNTRY</b>	<b>CLEANING CODES</b>	
01/2024	India	S	

**ADDITIONAL PRODUCT NOTES**

Ca Tb 117-2013