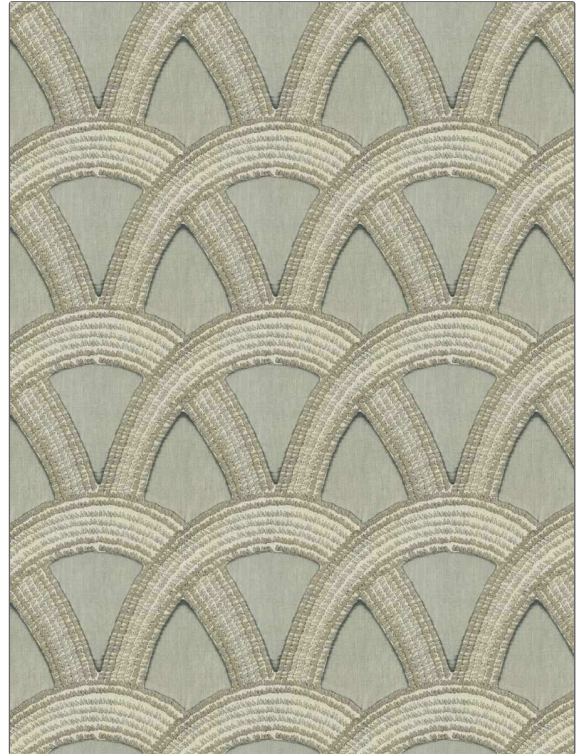


**PATTERN** Imbue  
**COLOR** Willow

<b>BRAND</b>	<b>APPLICATION</b>
<b>Fabricut</b>	<b>Fabric</b>
<b>USES</b>	<b>CATEGORIES</b>
<b>Bedding, Drapery</b>	<b>Crewels / Embroideries, Linen</b>
<b>BOOK</b>	<b>COLORS</b>
<b>Natural Nuances (5 Books) Willow</b>	<b>Grey, Taupe / Tan</b>
<b>DESIGN TYPES</b>	<b>SCALE</b>
<b>Embroidery, Lattice / Fretwork</b>	<b>Large</b>
<b>DIRECTION SHOWN</b>	
<b>Up the Bolt</b>	



WIDTH	VERTICAL REPEAT	HORIZONTAL REPEAT	CONTENT
51.00 in (129.54 cm)	9.25 in (23.50 cm)	8.46 in (21.49 cm)	<b>Embroidery: 58% Viscose, 42% Cotton, Base: 50% Cotton, 35% Viscose, 15% Linen</b>
BACKING	PRODUCT NUMBER	DATE BOOKED	COUNTRY
	1507501	01/2024	India
CLEANING CODES			
S			

**ADDITIONAL PRODUCT NOTES**

Ca Tb 117-2013, Exclusive Pattern, Embroidered Textiles Are Not, Guaranteed For Precise Color, Matching And Colorfastness., Color Placement Of Embroidery, May Vary. All Measurements, Quoted For Repeats Are, Approximate.