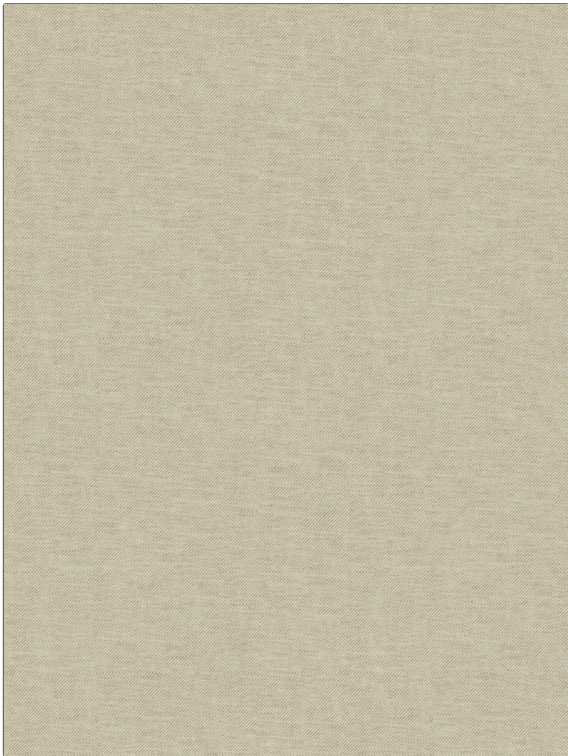


PATTERN	Farish
COLOR	Birch

BRAND	APPLICATION
Fabricut	Fabric
USES	CATEGORIES
Bedding, Drapery	Wide Width
BOOK	COLORS
Horizon Wide Drapery & Bedding	Beige, Linen
DESIGN TYPES	DIRECTION SHOWN
Solid	Railroaded



WIDTH	VERTICAL REPEAT	HORIZONTAL REPEAT	CONTENT
120.00 in (304.80 cm)	0.00 in (0.00 cm)	0.00 in (0.00 cm)	80% Polyester, 20% Cotton
BACKING	FIRE CODES	DOUBLE RUBS	PRODUCT NUMBER
	UFAC Class I / NFPA 260	Exceeds 50,000 Double Rubs (Wyzenbeek Method)	1550714
DATE BOOKED	COUNTRY	CLEANING CODES	
01/2024	India	S	

ADDITIONAL PRODUCT NOTES

Passes 90,000 Martindale Tst, Oeko Tex Standard 100, Iso 14001, Ca Tb 117-2013, Shown Railroaded, Exclusive Pattern, Eco / Environment Plus