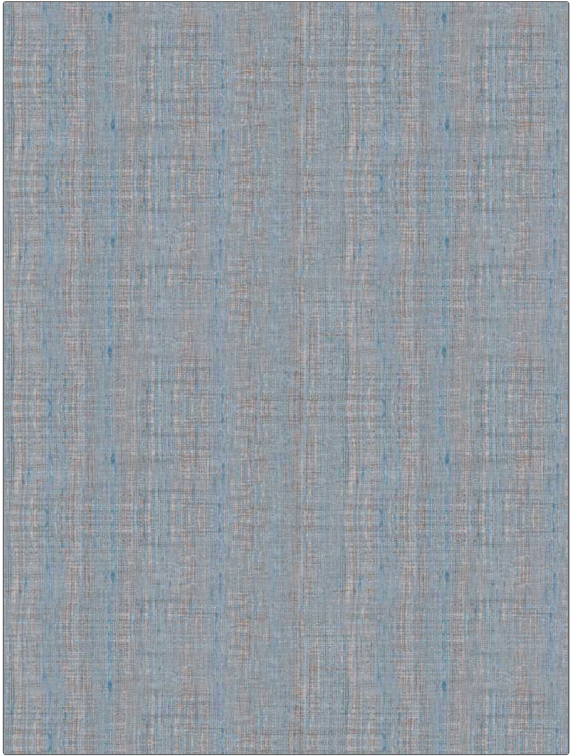


PATTERN	Awned
COLOR	Sky

BRAND	APPLICATION
Fabricut	Fabric
USES	CATEGORIES
Bedding, Drapery	NFPA 701 FR, Faux Silk
BOOK	COLORS
Horizon Wide Drapery & Bedding	Light Blue
DESIGN TYPES	DIRECTION SHOWN
Texture Plain	Railroaded



WIDTH	VERTICAL REPEAT	HORIZONTAL REPEAT	CONTENT
118.00 in (299.72 cm)	0.00 in (0.00 cm)	0.00 in (0.00 cm)	62% Recycled Polyester, 38% Polyester
BACKING	FIRE CODES	DOUBLE RUBS	PRODUCT NUMBER
	Passes NFPA 701, Passes MVS 302	Exceeds 27,800 Double Rubs (Wyzenbeek Method)	1551707
DATE BOOKED	COUNTRY	CLEANING CODES	
01/2024	India	S	

ADDITIONAL PRODUCT NOTES
Passes 14,000 Martindale Tst, Oeko Tex Standard 100, Iso 14001, In Compliance With Ca Prop 65, Ca Tb 117-2013, Passes Can / ULC-S109, Shown Railroaded, Exclusive Pattern, Eco / Environment Plus