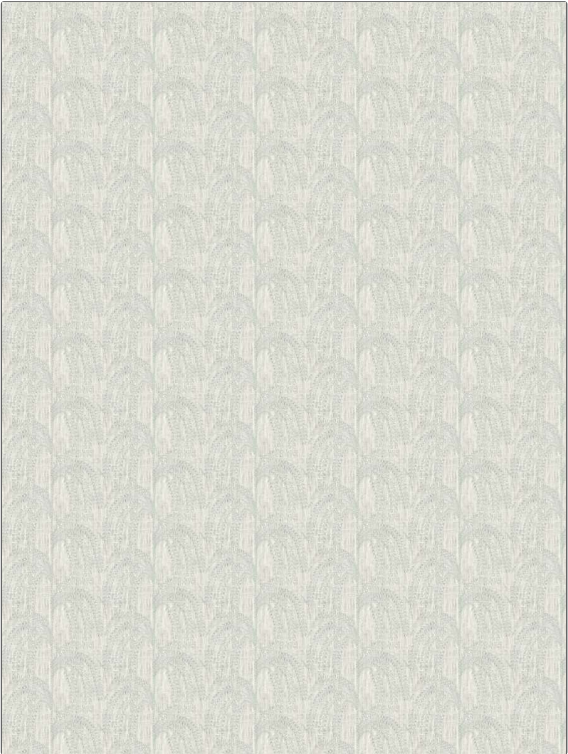


PATTERN	Anna Vine
COLOR	Spring

BRAND	APPLICATION
Fabricut	Fabric
USES	CATEGORIES
Bedding, Drapery	Crewels / Embroideries
BOOK	COLORS
Kendall Wilkinson Vignettes (3 Books) Crystal / Spring	Light Blue, Aqua / Teal
DESIGN TYPES	SCALE
Embroidery, Floral, Leaves	Medium
DIRECTION SHOWN	
Up the Bolt	



WIDTH	VERTICAL REPEAT	HORIZONTAL REPEAT	CONTENT
54.00 in (137.16 cm)	3.14 in (7.98 cm)	4.88 in (12.40 cm)	Embroidery: 50% Viscose, 50% Cotton, Base: 52% Polyester, 48% Cotton
BACKING	FIRE CODES	PRODUCT NUMBER	DATE BOOKED
	UFAC Class I / NFPA 260	1563003	07/2024
COUNTRY			
India			

ADDITIONAL PRODUCT NOTES
Ca Tb 117-2013, Exclusive Pattern, Dry Clean Only, Hand-Embroidered Crewels Are, Not Guaranteed Against Fading, Or For Precise Color Matching, Colorfastness And Durability., Color Placement Of Hand-, Embroidered Crewelwork May, Vary. Cutting From Current, Stock Is Recommended. All, Measurements Quoted For, Repeats Are Approximate., Embroidered Textiles Are Not, Guaranteed For Precise Color, Matching And Colorfastness., Color Placement Of Embroidery, May Vary. All Measurements, Quoted For Repeats Are, Approximate.