

**PATTERN** Parker  
**COLOR** Sapphire

**BRAND**

**Fabricut**

**APPLICATION**

**Fabric**

**USES**

**Bedding, Drapery,  
Multipurpose**

**CATEGORIES**

**Prints, Linen**

**BOOK**

**Kendall Wilkinson  
Vignettes (3 Books)  
Sapphire / Forest**

**COLORS**

**Blue**

**DESIGN TYPES**

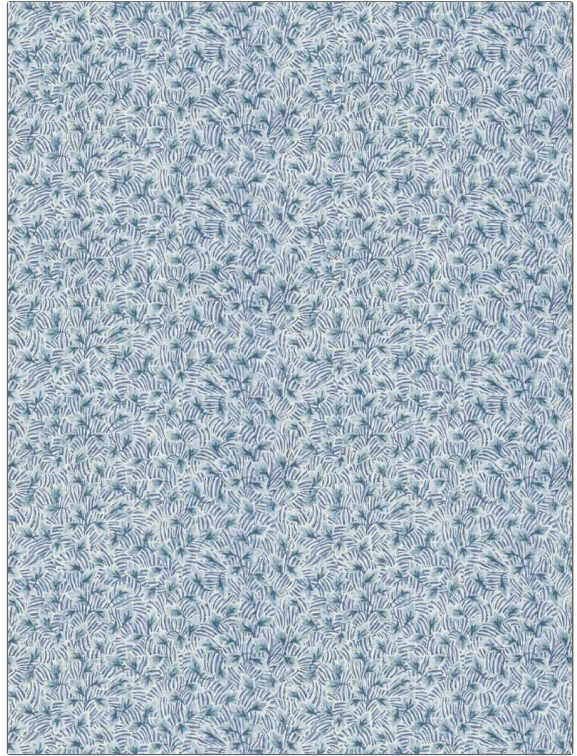
**Leaves, Print Pattern**

**SCALE**

**Small**

**DIRECTION SHOWN**

**Up the Bolt**



**WIDTH**

**54.00 in (137.16 cm)**

**VERTICAL REPEAT**

**8.88 in (22.56 cm)**

**HORIZONTAL REPEAT**

**13.50 in (34.29 cm)**

**CONTENT**

**44% Cotton, 31% Linen,  
25% Rayon**

**BACKING**

**FIRE CODES**

**Passes NFPA 260**

**DOUBLE RUBS**

**Exceeds 36,000 Double  
Rubs (Wyzenbeek Method)**

**PRODUCT NUMBER**

**1563905**

**DATE BOOKED**

**07/2024**

**COUNTRY**

**China**

**CLEANING CODES**

**S**

**ADDITIONAL PRODUCT NOTES**

**Ca Tb 117-2013, Exclusive Pattern, Pre-Shrunk 2-3%**