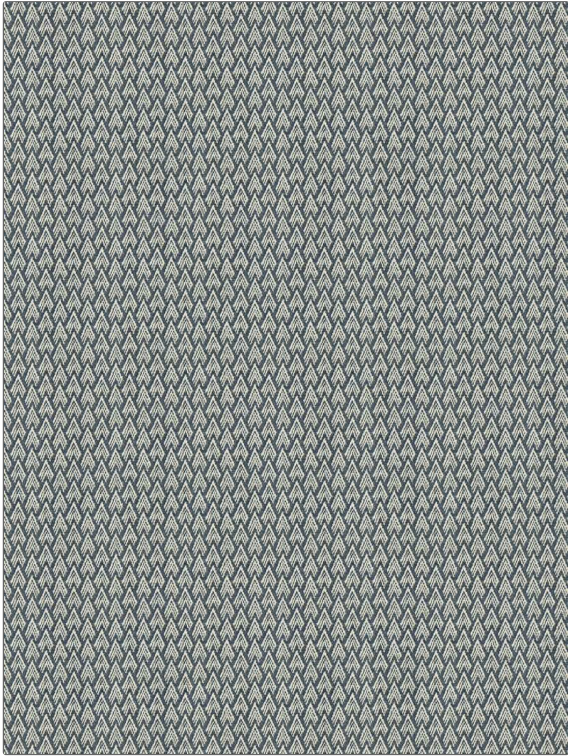


**PATTERN** Sacred Geometry  
**COLOR** Navy

|  |                    |
|--|--------------------|
| <b>BRAND</b>   | <b>APPLICATION</b> |
| Fabricut   | Fabric             |
| <b>USES</b>  | <b>CATEGORIES</b>  |
| Upholstery   | Wovens             |
| <b>BOOK</b>  | <b>COLORS</b>      |
| Kendall Wilkinson Vignettes (3 Books)<br>Sapphire / Forest | Navy               |
| <b>DESIGN TYPES</b>  | <b>SCALE</b>       |
| Geometric, Small Scale Woven                               | Small              |
| <b>DIRECTION SHOWN</b>                                     |                    |
| Up the Bolt  |                    |



|                      |                         |   |  |
|----------------------|-------------------------|---|--|
| <b>WIDTH</b>         | <b>VERTICAL REPEAT</b>  | <b>HORIZONTAL REPEAT</b>                      | <b>CONTENT</b>                         |
| 54.00 in (137.16 cm) | 1.13 in (2.87 cm)       | 1.50 in (3.81 cm)                             | 60% Cotton, 20% Viscose, 20% Polyester |
| <b>BACKING</b>       | <b>FIRE CODES</b>       | <b>DOUBLE RUBS</b>                            | <b>PRODUCT NUMBER</b>                  |
|                      | UFAC Class I / NFPA 260 | Exceeds 36,000 Double Rubs (Wyzenbeek Method) | 1636401                                |
| <b>DATE BOOKED</b>   | <b>COUNTRY</b>          | <b>CLEANING CODES</b>                         |  |
| 07/2024              | Turkey                  | S   |  |

**ADDITIONAL PRODUCT NOTES**

Passes 35,000 Martindale Tst, Ca Tb 117-2013, Exclusive Pattern