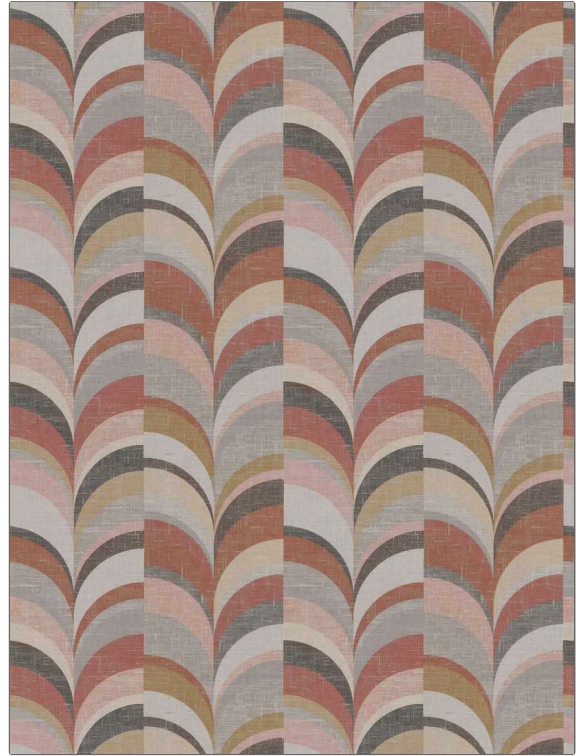


**PATTERN** Arches  
**COLOR** Fiery

<b>BRAND</b>	<b>APPLICATION</b>
<b>Fabricut</b>	<b>Fabric</b>
<b>USES</b>	<b>CATEGORIES</b>
<b>Bedding, Drapery, Multipurpose, Upholstery</b>	<b>Prints</b>
<b>BOOK</b>	<b>COLORS</b>
<b>Modern Home (4 Books) Fiery Saffron</b>	<b>Red, Multi-Color</b>
<b>DESIGN TYPES</b>	<b>SCALE</b>
<b>Geometric, Contemporary / Modern, Abstract</b>	<b>Large</b>
<b>DIRECTION SHOWN</b>	
<b>Up the Bolt</b>	



WIDTH	VERTICAL REPEAT	HORIZONTAL REPEAT	CONTENT
53.00 in (134.62 cm)	12.40 in (31.50 cm)	13.39 in (34.01 cm)	53% Cotton, 47% Linen
BACKING	FIRE CODES	DOUBLE RUBS	PRODUCT NUMBER
	UFAC Class I / NFPA 260	Exceeds 24,000 Double Rubs (Wyzenbeek Method)	1856102
DATE BOOKED	COUNTRY	CLEANING CODES	
07/2024	India	S	

**ADDITIONAL PRODUCT NOTES**

Passes 12,000 Martindale Tst, Ca Tb 117-2013, Exclusive Pattern