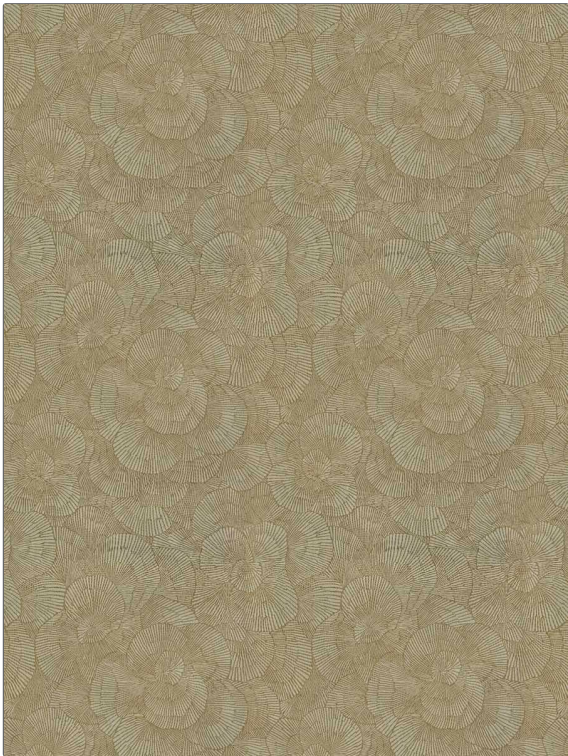


| | |
|---|--------------------|
| PATTERN | Saki Floral |
| COLOR | Umber |
| BRAND | APPLICATION |
| Fabricut | Fabric |
| USES | CATEGORIES |
| Bedding, Drapery | Faux Silk |
| BOOK | COLORS |
| Modern Home (4 Books) Fiery Saffron | Taupe / Tan |
| DESIGN TYPES | SCALE |
| Jacquard Pattern, Asian, Contemporary / Modern, Abstract | Medium |
| DIRECTION SHOWN | |
| Up the Bolt | |



| | | | |
|-----------------------------|--------------------------------|--|--|
| WIDTH | VERTICAL REPEAT | HORIZONTAL REPEAT | CONTENT |
| 53.00 in (134.62 cm) | 28.75 in (73.02 cm) | 26.50 in (67.31 cm) | 46% Viscose, 40% Polyester, 14% Acrylic |
| BACKING | FIRE CODES | DOUBLE RUBS | PRODUCT NUMBER |
| | UFAC Class I / NFPA 260 | Exceeds 30,000 Double Rubs (Wyzenbeek Method) | 1857906 |
| DATE BOOKED | COUNTRY | CLEANING CODES | |
| 07/2024 | India | S | |

| |
|---|
| ADDITIONAL PRODUCT NOTES |
| Passes 10,000 Martindale Tst, Iso 14001, Ca Tb 117-2013, Exclusive Pattern |