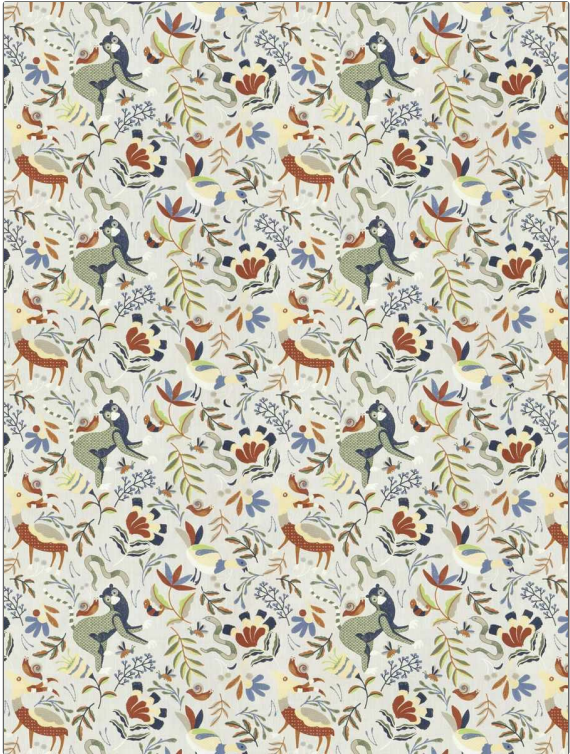


PATTERN	Into The Woods
COLOR	Storm
BRAND	APPLICATION
Fabricut	Fabric
USES	CATEGORIES
Bedding, Drapery	Crewels / Embroideries
BOOK	COLORS
Modern Home (4 Books) Fiery Saffron	Linen
DESIGN TYPES	SCALE
Animal, Kids, Leaves, Novelty, Tropical / Botanical	Large
DIRECTION SHOWN	
Up the Bolt	



WIDTH	VERTICAL REPEAT	HORIZONTAL REPEAT	CONTENT
51.00 in (129.54 cm)	18.10 in (45.97 cm)	25.50 in (64.77 cm)	Embroidery: 100% Cotton, Base: 42% Cotton, 20% Polyester, 20% Linen, 18% Viscose
BACKING	FIRE CODES	DOUBLE RUBS	PRODUCT NUMBER
	UFAC Class I / NFPA 260	Exceeds 25,000 Double Rubs (Wyzenbeek Method)	1874205
DATE BOOKED	COUNTRY	CLEANING CODES	
07/2024	India	SW	

ADDITIONAL PRODUCT NOTES
Passes 25,000 Martindale Tst, Ca Tb 117-2013, Exclusive Pattern, Embroidered Textiles Are Not, Guaranteed For Precise Color, Matching And Colorfastness., Color Placement Of Embroidery, May Vary. All Measurements, Quoted For Repeats Are, Approximate.