

**PATTERN** Kieran  
**COLOR** Moss

**BRAND**

**Fabricut**

**APPLICATION**

**Fabric**

**CATEGORIES**

**Easy To Clean, Wovens, Chenille**

**COLORS**

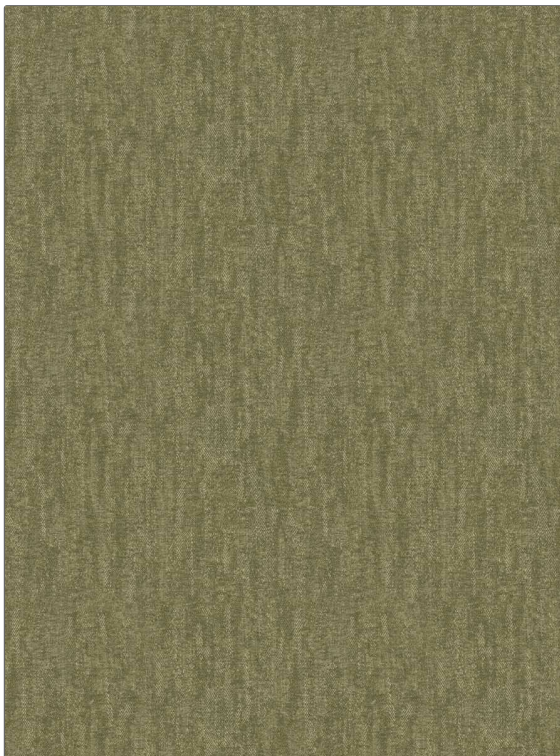
**Green**

**DESIGN TYPES**

**Herringbone, Texture Plain, Contemporary / Modern**

**RAILROADED**

**Not Railroaded**



**WIDTH**

**54.00 in (137.16 cm)**

**FINISH**

**Alta Performance**

**VERTICAL REPEAT**

**0.00 in (0.00 cm)**

**HORIZONTAL REPEAT**

**0.00 in (0.00 cm)**

**CONTENT**

**63% Polyester, 18% Cotton, 10% Linen, 9% Viscose**

**BACKING**

**Light Acrylic Backing**

**FIRE CODES**

**UFAC Class I / NFPA 260**

**DOUBLE RUBS**

**Exceeds 50,000 Double Rubs (Wyzenbeek Method)**

**PRODUCT NUMBER**

**2158105**

**COUNTRY**

**Turkey**

**CLEANING CODES**

**WS**

**ADDITIONAL PRODUCT NOTES**

**Alta Performance, Passes 26,000 Martindale Tst, Ca Tb 117-2013, Light Acrylic Backing, Exclusive Pattern**