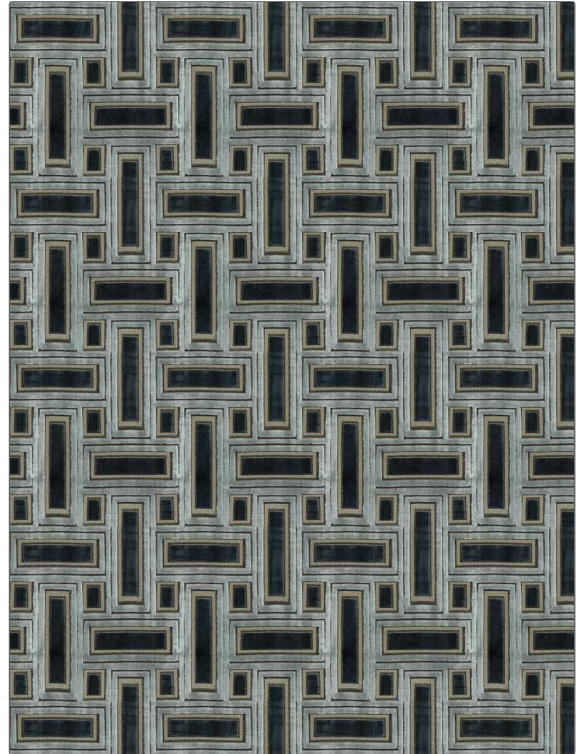


PATTERN	Theemin
COLOR	Tourmaline
BRAND	APPLICATION
Fabricut	Fabric
USES	CATEGORIES
Upholstery	Velvet / Grospoint
BOOK	COLORS
Luxe Metallics & Velvet (3 Books) Tourmaline	Blue, Metallic
DESIGN TYPES	SCALE
Geometric, Lattice / Fretwork	Medium
DIRECTION SHOWN	
Up the Bolt	



WIDTH	VERTICAL REPEAT	HORIZONTAL REPEAT	CONTENT
57.00 in (144.78 cm)	8.25 in (20.96 cm)	7.00 in (17.78 cm)	51% Viscose, 49% Polyester
BACKING	FIRE CODES	DOUBLE RUBS	PRODUCT NUMBER
	UFAC Class I / NFPA 260	Exceeds 100,000 Double Rubs (Wyzenbeek Method)	2961401
DATE BOOKED	COUNTRY	CLEANING CODES	
01/2021	India	S	

ADDITIONAL PRODUCT NOTES
Ca Tb 117-2013