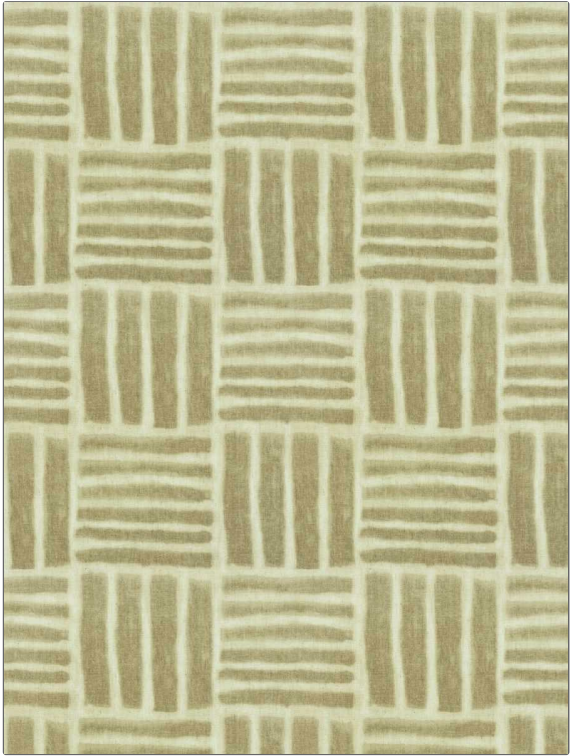


**PATTERN** Sabai  
**COLOR** 01

|  |                                |
|--|--------------------------------|
| <b>BRAND</b>                               | <b>APPLICATION</b>             |
| Fabricut                                   | Fabric                         |
| <b>USES</b>                                | <b>CATEGORIES</b>              |
| Bedding, Drapery, Multipurpose, Upholstery | Prints                         |
| <b>COLORS</b>                              | <b>DESIGN TYPES</b>            |
| Linen, Gold                                | Global / Ethnic, Print Pattern |
| <b>SCALE</b>                               | <b>DIRECTION SHOWN</b>         |
| Large                                      | Up the Bolt                    |



|                      |                         |   |                          |
|----------------------|-------------------------|---|--------------------------|
| <b>WIDTH</b>         | <b>VERTICAL REPEAT</b>  | <b>HORIZONTAL REPEAT</b>                      | <b>CONTENT</b>           |
| 54.00 in (137.16 cm) | 13.50 in (34.29 cm)     | 13.62 in (34.59 cm)                           | 89% Polyester, 11% Linen |
| <b>BACKING</b>       | <b>FIRE CODES</b>       | <b>DOUBLE RUBS</b>                            | <b>PRODUCT NUMBER</b>    |
|                      | UFAC Class I / NFPA 260 | Exceeds 30,000 Double Rubs (Wyzenbeek Method) | 3036201                  |
| <b>COUNTRY</b>       | <b>CLEANING CODES</b>   |   |                          |
| Turkey               | S                       |   |                          |

**ADDITIONAL PRODUCT NOTES**

Ca Tb 117-2013