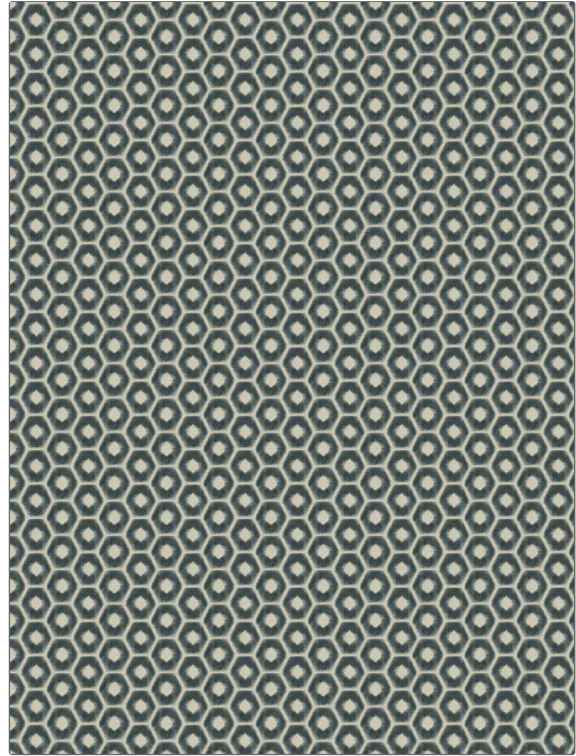


PATTERN Syrma
COLOR Mineral

BRAND	APPLICATION
Fabricut	Fabric
USES	CATEGORIES
Upholstery	Velvet / Grospoint, Wovens
BOOK	COLORS
Luxe Metallics & Velvet (3 Books) Tourmaline	Aqua / Teal
DESIGN TYPES	SCALE
Geometric, Small Scale Woven, Contemporary / Modern	Small
DIRECTION SHOWN	
Up the Bolt	



WIDTH	VERTICAL REPEAT	HORIZONTAL REPEAT	CONTENT
56.00 in (142.24 cm)	1.50 in (3.81 cm)	2.50 in (6.35 cm)	88% Viscose, 12% Polyester
BACKING	FIRE CODES	DOUBLE RUBS	PRODUCT NUMBER
Light Acrylic Backing	UFAC Class I	Exceeds 54,000 Double Rubs (Wyzenbeek Method)	3054903
DATE BOOKED	COUNTRY	CLEANING CODES	
01/2021	China	S	

ADDITIONAL PRODUCT NOTES

Ca Tb 117-2013, Light Acrylic Backing