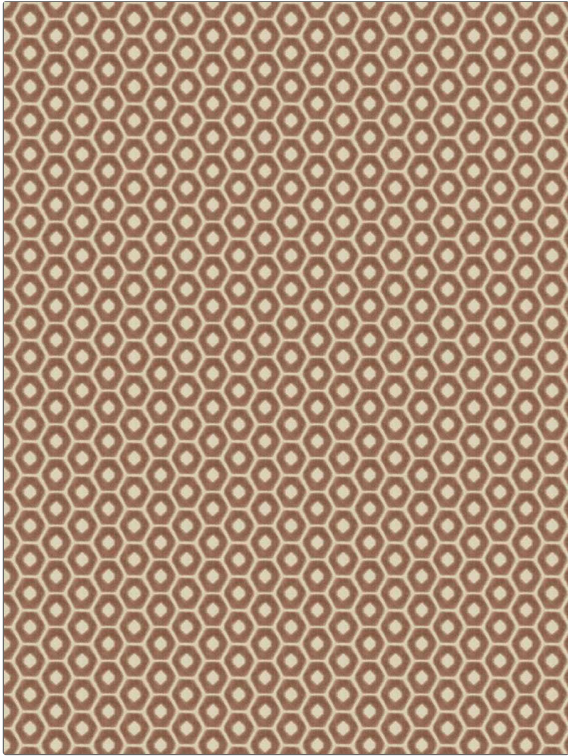


| | |
|----------------|--------------|
| PATTERN | Syrma |
| COLOR | Blush |

| | |
|--|-----------------------------------|
| BRAND | APPLICATION |
| Fabricut | Fabric |
| USES | CATEGORIES |
| Upholstery | Velvet / Grospoint, Wovens |
| BOOK | COLORS |
| Luxe Metallics & Velvet (3 Books) Pearlescent | Pink |
| DESIGN TYPES | SCALE |
| Geometric, Small Scale Woven, Contemporary / Modern | Small |
| DIRECTION SHOWN | |
| Up the Bolt | |



| | | | |
|------------------------------|--------------------------|--|-----------------------------------|
| WIDTH | VERTICAL REPEAT | HORIZONTAL REPEAT | CONTENT |
| 56.00 in (142.24 cm) | 1.50 in (3.81 cm) | 2.50 in (6.35 cm) | 88% Viscose, 12% Polyester |
| BACKING | FIRE CODES | DOUBLE RUBS | PRODUCT NUMBER |
| Light Acrylic Backing | UFAC Class I | Exceeds 54,000 Double Rubs (Wyzenbeek Method) | 3054905 |
| DATE BOOKED | COUNTRY | CLEANING CODES | |
| 01/2021 | China | S | |

| |
|--|
| ADDITIONAL PRODUCT NOTES |
| Ca Tb 117-2013, Light Acrylic Backing |