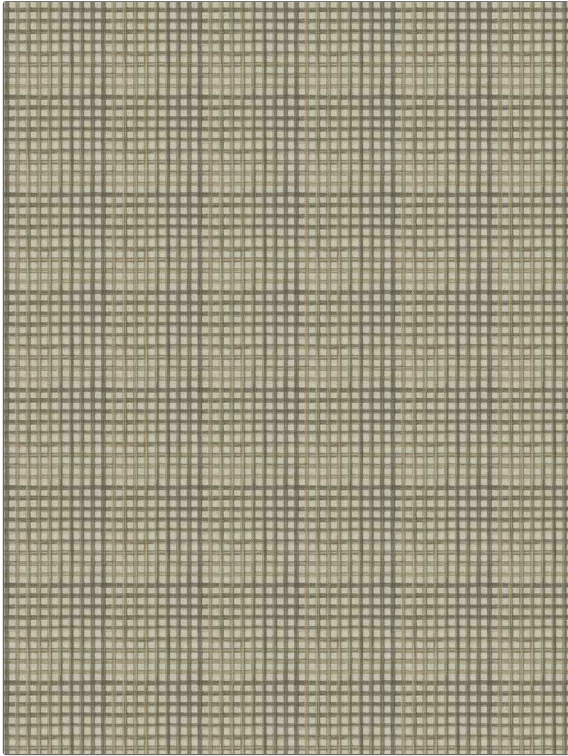


**PATTERN** **Tupelo**  
**COLOR** **Dune**

<b>BRAND</b>	<b>APPLICATION</b>
<b>Fabricut</b>	<b>Fabric</b>
<b>USES</b>	<b>CATEGORIES</b>
<b>Bedding, Drapery, Multipurpose</b>	<b>Wovens</b>
<b>BOOK</b>	<b>COLORS</b>
<b>Natural Nuances (5 Books) Oyster</b>	<b>Grey, Linen</b>
<b>DESIGN TYPES</b>	<b>SCALE</b>
<b>Check / Plaid</b>	<b>Medium</b>
<b>DIRECTION SHOWN</b>	
<b>Up the Bolt</b>	



<b>WIDTH</b>	<b>VERTICAL REPEAT</b>	<b>HORIZONTAL REPEAT</b>	<b>CONTENT</b>
<b>54.00 in (137.16 cm)</b>	<b>4.62 in (11.73 cm)</b>	<b>4.62 in (11.73 cm)</b>	<b>58% Polyester, 36% Cotton, 6% Linen</b>
<b>BACKING</b>	<b>FIRE CODES</b>	<b>DOUBLE RUBS</b>	<b>PRODUCT NUMBER</b>
	<b>UFAC Class I / NFPA 260</b>	<b>Exceeds 50,000 Double Rubs (Wyzenbeek Method)</b>	<b>3233201</b>
<b>DATE BOOKED</b>	<b>COUNTRY</b>	<b>CLEANING CODES</b>	
<b>12/2020</b>	<b>India</b>	<b>S</b>	

**ADDITIONAL PRODUCT NOTES**

**Ca Tb 117-2013**