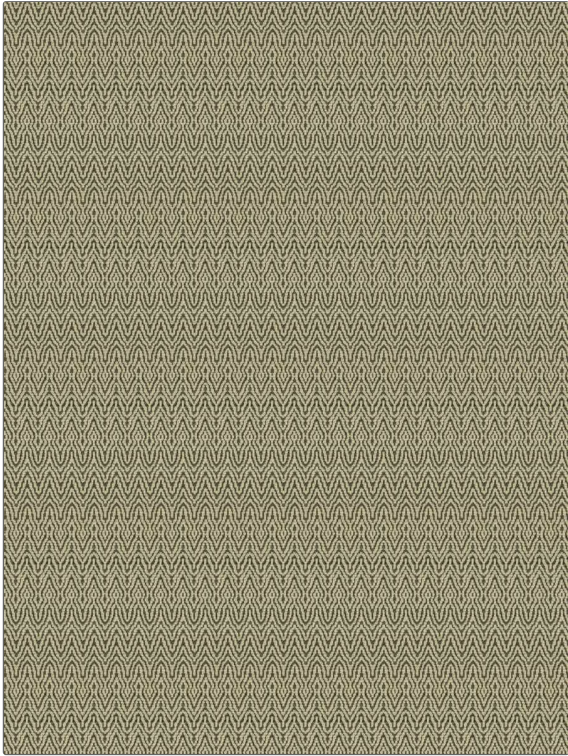


PATTERN **Soundtrack**
COLOR **Shitake**

BRAND	APPLICATION
Fabricut	Fabric
USES	CATEGORIES
Upholstery	Crypton Home, Wovens
BOOK	COLORS
Crypton Home Performance By Color Marble	Grey, Linen
DESIGN TYPES	SCALE
Geometric, Global / Ethnic, Chevron	Small
DIRECTION SHOWN	
Up the Bolt	



WIDTH	FINISH	VERTICAL REPEAT	HORIZONTAL REPEAT
52.00 in (132.08 cm)	Crypton Home	1.06 in (2.69 cm)	7.56 in (19.20 cm)
CONTENT	BACKING	FIRE CODES	DOUBLE RUBS
64% Polyester, 18% Olefin, 11% Cotton, 5% Rayon, 2% Flax	100% Acrylic Backing	UFAC Class I / NFPA 260	Exceeds 63,000 Double Rubs (Wyzenbeek Method)
PRODUCT NUMBER	DATE BOOKED	COUNTRY	CLEANING CODES
3945101	09/2020	USA	W

ADDITIONAL PRODUCT NOTES

Crypton Home, Pfas-Free, Ca Tb 117-2013, 100% Acrylic Backing, Exclusive Pattern