

**PATTERN** Workshop  
**COLOR** Sand

**BRAND**

**Fabricut**

**APPLICATION**

**Fabric**

**USES**

**Upholstery**

**CATEGORIES**

**Crypton Home, Easy To Clean, Wovens, Chenille, Lining**

**BOOK**

**Crypton Home Performance By Color Marble**

**COLORS**

**Beige**

**DESIGN TYPES**

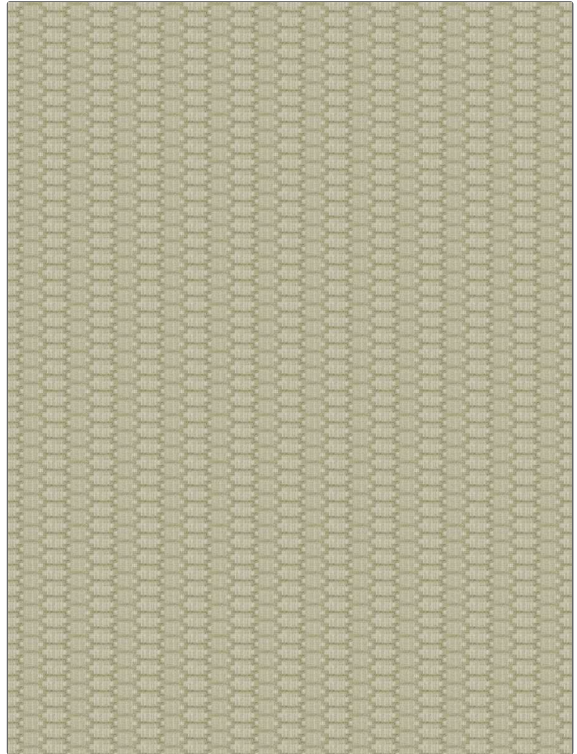
**Geometric, Jacquard Pattern, Small Scale Woven, Contemporary / Modern**

**SCALE**

**Small**

**RAILOADED**

**Not Railroaded**



**WIDTH**

**55.00 in (139.70 cm)**

**FINISH**

**Crypton Home**

**VERTICAL REPEAT**

**0.75 in (1.90 cm)**

**HORIZONTAL REPEAT**

**2.25 in (5.72 cm)**

**CONTENT**

**62% Polyester, 35% Rayon, 3% Cotton**

**BACKING**

**100% Acrylic Backing**

**FIRE CODES**

**UFAC Class I / NFPA 260**

**DOUBLE RUBS**

**Exceeds 51,000 Double Rubs (Wyzenbeek Method)**

**PRODUCT NUMBER**

**3945406**

**DATE BOOKED**

**09/2020**

**COUNTRY**

**USA**

**CLEANING CODES**

**W**

**ADDITIONAL PRODUCT NOTES**

**Crypton Home, Pfas-Free, Ca Tb 117-2013, 100% Acrylic Backing, Exclusive Pattern**