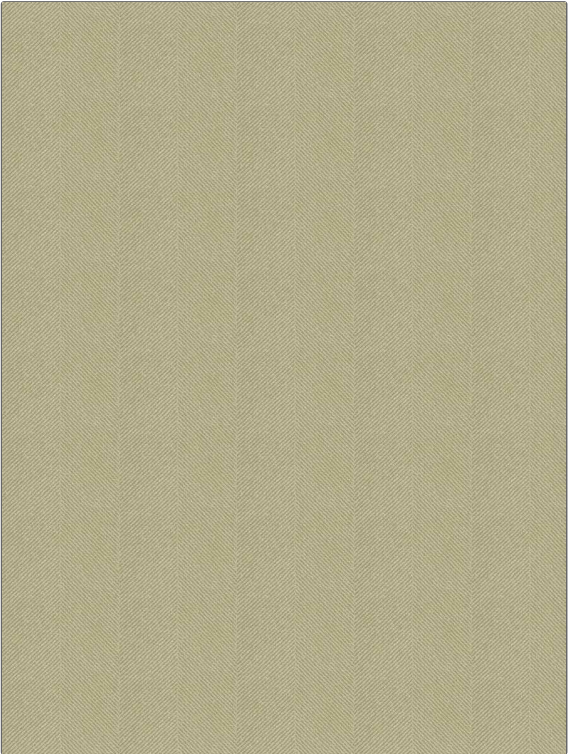


| | |
|---------|--------------------|
| PATTERN | Focal Point |
| COLOR | Sand |

| | |
|---|-------------------------------------|
| BRAND | APPLICATION |
| Fabricut | Fabric |
| USES | CATEGORIES |
| Upholstery | Crypton Home, Easy To Clean, Wovens |
| BOOK | COLORS |
| Crypton Home Performance By Color Canyon | Beige |
| DESIGN TYPES | SCALE |
| Herringbone, Texture Plain, Contemporary / Modern | Medium |
| DIRECTION SHOWN | |
| Railroaded | |



| | | | |
|------------------------------------|----------------------|-------------------------|---|
| WIDTH | FINISH | VERTICAL REPEAT | HORIZONTAL REPEAT |
| 54.00 in (137.16 cm) | Crypton Home | 5.62 in (14.27 cm) | 0.00 in (0.00 cm) |
| CONTENT | BACKING | FIRE CODES | DOUBLE RUBS |
| 79% Rayon, 20% Polyester, 1% Nylon | 100% Acrylic Backing | UFAC Class I / NFPA 260 | Exceeds 60,000 Double Rubs (Wyzenbeek Method) |
| PRODUCT NUMBER | DATE BOOKED | COUNTRY | CLEANING CODES |
| 3983505 | 09/2020 | USA | W |

| |
|---|
| ADDITIONAL PRODUCT NOTES |
| Crypton Home, Pfas-Free, Ca Tb 117-2013, 100% Acrylic Backing, Shown Railroaded |