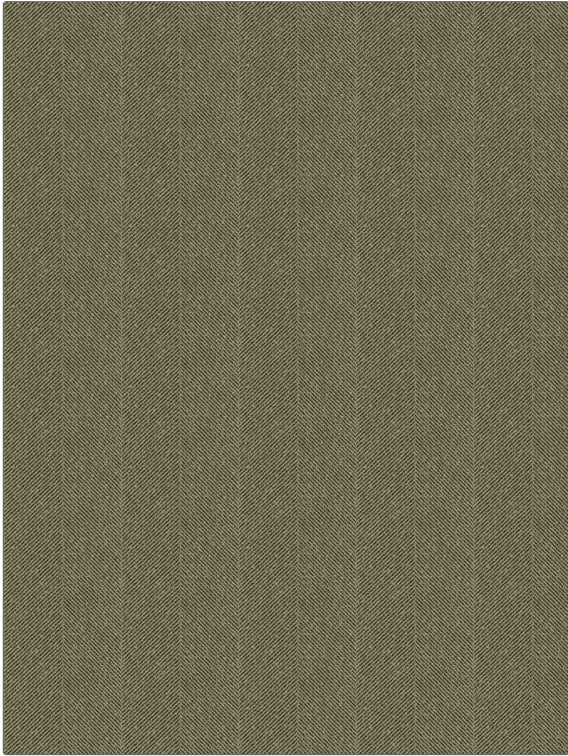


PATTERN Focal Point
COLOR 06

BRAND	APPLICATION
Fabricut	Fabric
USES	CATEGORIES
Upholstery	Crypton Home, Easy To Clean, Wovens
COLORS	DESIGN TYPES
Taupe / Tan	Herringbone, Texture Plain, Contemporary / Modern
SCALE	DIRECTION SHOWN
Medium	Railroaded



WIDTH	FINISH	VERTICAL REPEAT	HORIZONTAL REPEAT
54.00 in (137.16 cm)	Crypton Home	5.62 in (14.27 cm)	0.00 in (0.00 cm)
CONTENT	BACKING	FIRE CODES	DOUBLE RUBS
79% Rayon, 20% Polyester, 1% Nylon	100% Acrylic Backing	UFAC Class I / NFPA 260	Exceeds 60,000 Double Rubs (Wyzenbeek Method)
PRODUCT NUMBER	COUNTRY	CLEANING CODES	
3983606	USA	W	

ADDITIONAL PRODUCT NOTES

Crypton Home, Pfas-Free, Ca Tb 117-2013, 100% Acrylic Backing, Shown Railroaded