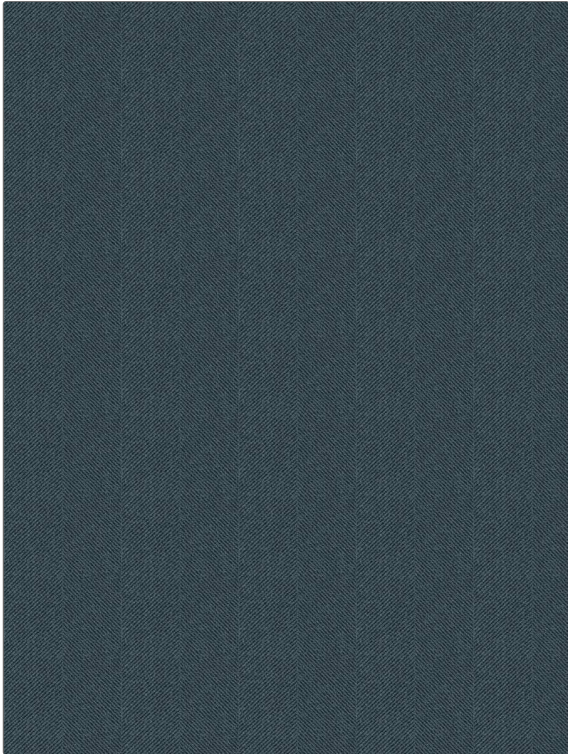


**PATTERN** Focal Point  
**COLOR** 12

|               |                                                   |
|---------------|---------------------------------------------------|
| <b>BRAND</b>  | <b>APPLICATION</b>                                |
| Fabricut      | Fabric                                            |
| <b>USES</b>   | <b>CATEGORIES</b>                                 |
| Upholstery    | Crypton Home, Easy To Clean, Wovens               |
| <b>COLORS</b> | <b>DESIGN TYPES</b>                               |
| Blue          | Herringbone, Texture Plain, Contemporary / Modern |
| <b>SCALE</b>  | <b>DIRECTION SHOWN</b>                            |
| Medium        | Railroaded                                        |



|                                    |                      |                         |                                               |
|------------------------------------|----------------------|-------------------------|-----------------------------------------------|
| <b>WIDTH</b>                       | <b>FINISH</b>        | <b>VERTICAL REPEAT</b>  | <b>HORIZONTAL REPEAT</b>                      |
| 54.00 in (137.16 cm)               | Crypton Home         | 5.62 in (14.27 cm)      | 0.00 in (0.00 cm)                             |
| <b>CONTENT</b>                     | <b>BACKING</b>       | <b>FIRE CODES</b>       | <b>DOUBLE RUBS</b>                            |
| 79% Rayon, 20% Polyester, 1% Nylon | 100% Acrylic Backing | UFAC Class I / NFPA 260 | Exceeds 60,000 Double Rubs (Wyzenbeek Method) |
| <b>PRODUCT NUMBER</b>              | <b>COUNTRY</b>       | <b>CLEANING CODES</b>   |                                               |
| 3983612                            | USA                  | W                       |                                               |

**ADDITIONAL PRODUCT NOTES**

Crypton Home, Pfas-Free, Ca Tb 117-2013, 100% Acrylic Backing, Shown Railroaded