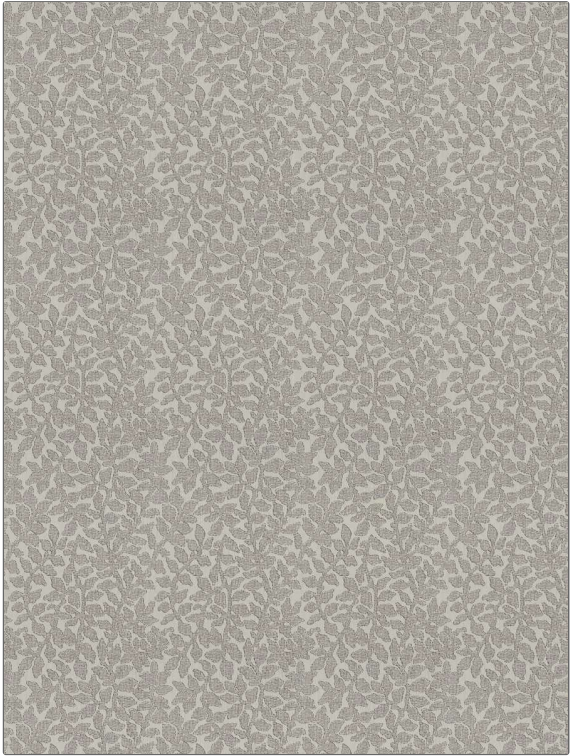


PATTERN Follette
COLOR Amethyst

| | |
|--------------------------------------------------------|--------------------|
| BRAND | APPLICATION |
| Fabricut | Fabric |
| USES | CATEGORIES |
| Bedding, Drapery, Multipurpose, Upholstery | Wovens |
| BOOK | COLORS |
| Kendall Wilkinson Vignettes (3 Books) Jardiniere | Lavender / Purple |
| DESIGN TYPES | SCALE |
| Leaves | Medium |
| RAILROADED | |
| Not Railed | |



| | | | |
|----------------------|-------------------------|--------------------------------------------------|-----------------------------------------|
| WIDTH | VERTICAL REPEAT | HORIZONTAL REPEAT | CONTENT |
| 56.00 in (142.24 cm) | 20.50 in (52.07 cm) | 14.00 in (35.56 cm) | 50% Cotton, 36% Rayon, 14% Polyester |
| BACKING | FIRE CODES | DOUBLE RUBS | PRODUCT NUMBER |
| | UFAC Class I / NFPA 260 | Exceeds 15,000 Double Rubs (Wyzenbeek Method) | 0421602 |
| DATE BOOKED | COUNTRY | CLEANING CODES | |
| 07/2019 | China | S | |

ADDITIONAL PRODUCT NOTES

Exclusive Pattern