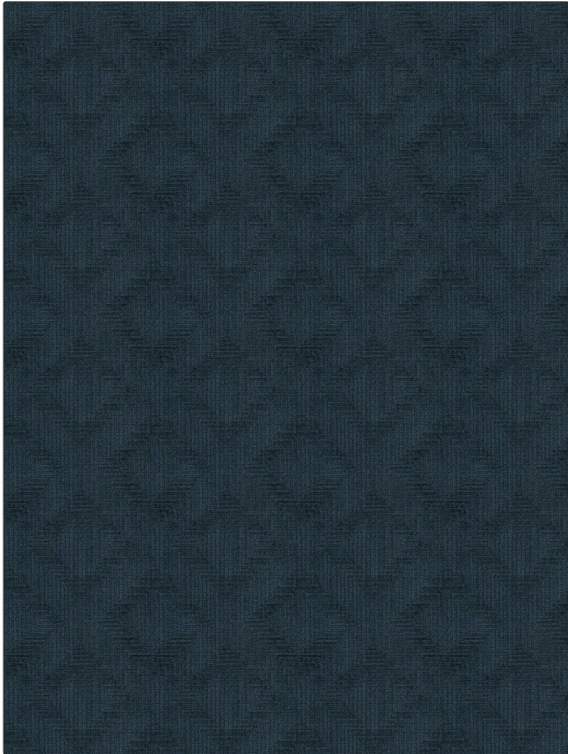


PATTERN Velvet Maze
COLOR 05



| | |
|---------------|---|
| BRAND | APPLICATION |
| Fabricut | Fabric |
| USES | CATEGORIES |
| Upholstery | Velvet / Grospoint, Wovens |
| COLORS | DESIGN TYPES |
| Blue | Geometric, Contemporary / Modern, Diamond |
| SCALE | DIRECTION SHOWN |
| Medium | Up the Bolt |

| | | | |
|-----------------------|-------------------------|---|------------------------------------|
| WIDTH | VERTICAL REPEAT | HORIZONTAL REPEAT | CONTENT |
| 55.00 in (139.70 cm) | 7.00 in (17.78 cm) | 7.00 in (17.78 cm) | 70% Rayon, 25% Polyester, 5% Linen |
| BACKING | FIRE CODES | DOUBLE RUBS | PRODUCT NUMBER |
| Light Acrylic Backing | UFAC Class I / NFPA 260 | Exceeds 24,000 Double Rubs (Wyzenbeek Method) | 0425805 |
| COUNTRY | CLEANING CODES | | |
| China | S | | |

ADDITIONAL PRODUCT NOTES

Ca Tb 117-2013, Light Acrylic Backing, Exclusive Pattern