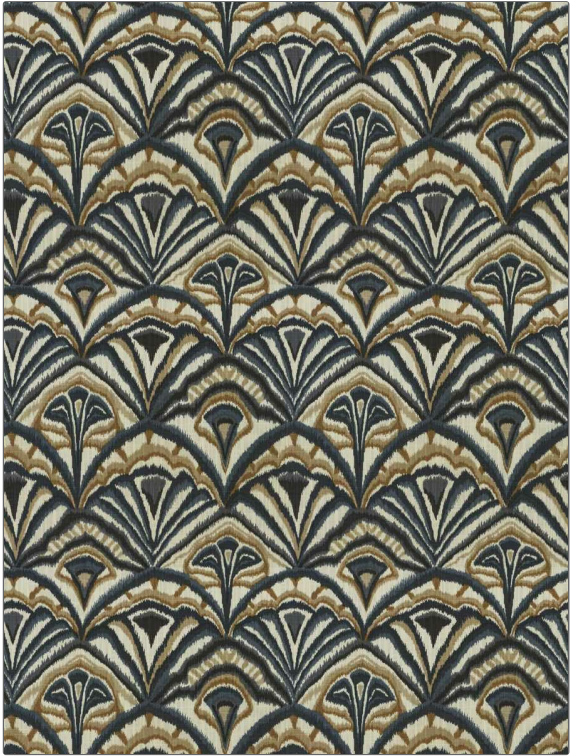


**PATTERN** **Yoru Ikat**  
**COLOR** **Ink**

<b>BRAND</b>	<b>APPLICATION</b>
<b>Fabricut</b>	<b>Fabric</b>
<b>USES</b>	<b>CATEGORIES</b>
<b>Bedding, Drapery, Multipurpose</b>	<b>Prints</b>
<b>BOOK</b>	<b>COLORS</b>
<b>Collective Threads (4 Books) Ink</b>	<b>Blue</b>
<b>DESIGN TYPES</b>	<b>SCALE</b>
<b>Global / Ethnic, Print Pattern, Bargello</b>	<b>Medium</b>
<b>RAILROADED</b>	
<b>Not Railroaded</b>	



<b>WIDTH</b>	<b>VERTICAL REPEAT</b>	<b>HORIZONTAL REPEAT</b>	<b>CONTENT</b>
<b>54.00 in (137.16 cm)</b>	<b>13.50 in (34.29 cm)</b>	<b>13.50 in (34.29 cm)</b>	<b>100% Cotton</b>
<b>BACKING</b>	<b>FIRE CODES</b>	<b>DOUBLE RUBS</b>	<b>PRODUCT NUMBER</b>
	<b>UFAC Class I / NFPA 260</b>	<b>Exceeds 15,000 Double Rubs (Wyzenbeek Method)</b>	<b>0427404</b>
<b>DATE BOOKED</b>	<b>COUNTRY</b>	<b>CLEANING CODES</b>	
<b>02/2020</b>	<b>China</b>	<b>S</b>	

**ADDITIONAL PRODUCT NOTES**  
**Ca Tb 117-2013, Exclusive Pattern**