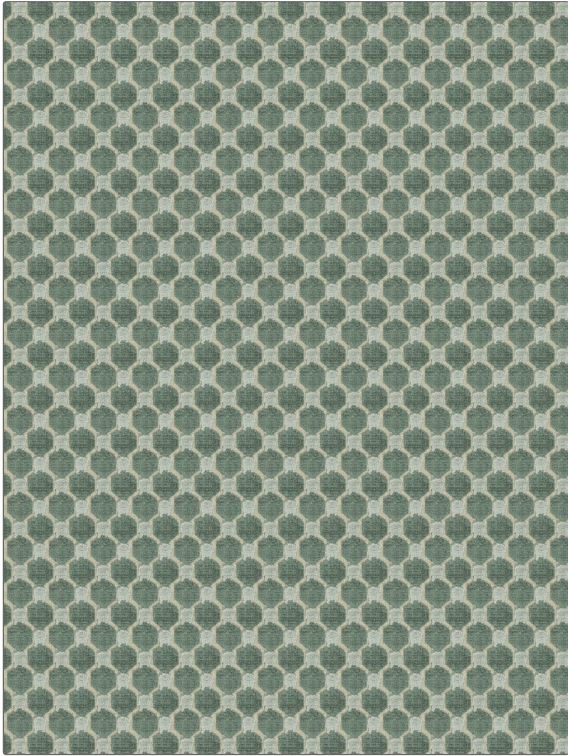


PATTERN Chima Hex
COLOR Loden Frost

BRAND	APPLICATION
Fabricut	Fabric
USES	CATEGORIES
Upholstery	Velvet / Grospoint, Wovens
BOOK	COLORS
Collective Threads (4 Books) Patina	Grey, Aqua / Teal
DESIGN TYPES	SCALE
Geometric	Small
RAILROADED	
Not Railroaded	



WIDTH	VERTICAL REPEAT	HORIZONTAL REPEAT	CONTENT
55.00 in (139.70 cm)	2.00 in (5.08 cm)	2.00 in (5.08 cm)	70% Rayon, 25% Polyester, 5% Linen
BACKING	FIRE CODES	DOUBLE RUBS	PRODUCT NUMBER
Light Acrylic Backing	UFAC Class I / NFPA 260	Exceeds 12,000 Double Rubs (Wyzenbeek Method)	0468803
DATE BOOKED	COUNTRY	CLEANING CODES	
02/2020	China	S	

ADDITIONAL PRODUCT NOTES
 Ca Tb 117-2013, Light Acrylic Backing, Exclusive Pattern