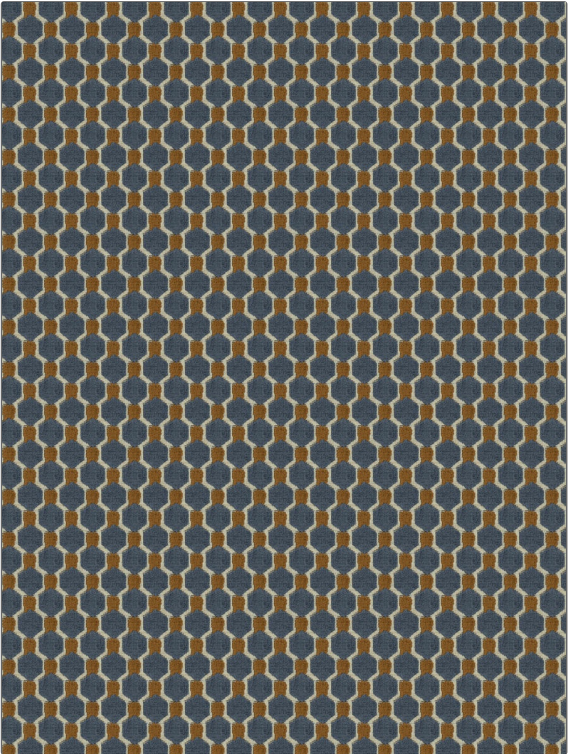


PATTERN	Chima Hex
COLOR	Copper Ink
BRAND	APPLICATION
Fabricut	Fabric
USES	CATEGORIES
Upholstery	Velvet / Grospoint, Wovens
BOOK	COLORS
Collective Threads (4 Books) Ink	Blue, Brown
DESIGN TYPES	SCALE
Geometric	Small
RAILOADED	
Not Railroaded	



WIDTH	VERTICAL REPEAT	HORIZONTAL REPEAT	CONTENT
55.00 in (139.70 cm)	2.00 in (5.08 cm)	2.00 in (5.08 cm)	70% Rayon, 25% Polyester, 5% Linen
BACKING	FIRE CODES	DOUBLE RUBS	PRODUCT NUMBER
Light Acrylic Backing	UFAC Class I / NFPA 260	Exceeds 12,000 Double Rubs (Wyzenbeek Method)	0468804
DATE BOOKED	COUNTRY	CLEANING CODES	
02/2020	China	S	

ADDITIONAL PRODUCT NOTES
Ca Tb 117-2013, Light Acrylic Backing, Exclusive Pattern