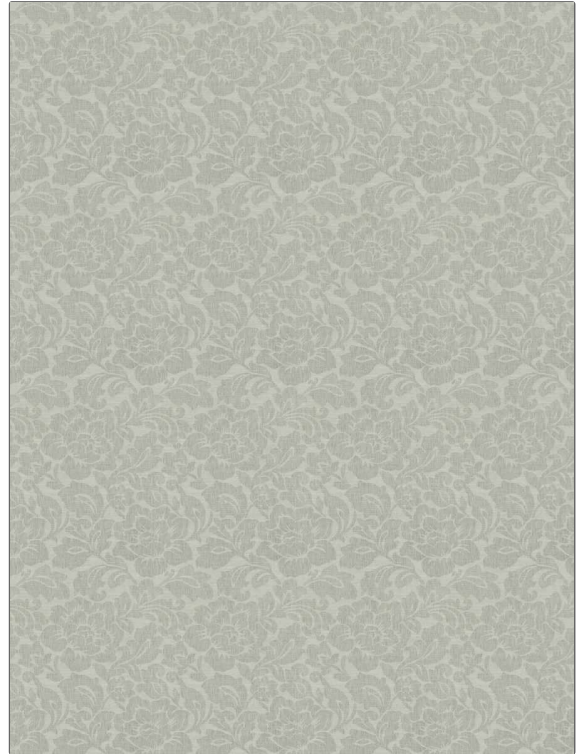


**PATTERN** Relationship  
**COLOR** Dew

<b>BRAND</b>	<b>APPLICATION</b>
<b>Fabricut</b>	<b>Fabric</b>
<b>USES</b>	<b>CATEGORIES</b>
<b>Bedding, Drapery, Multipurpose</b>	<b>Wovens</b>
<b>BOOK</b>	<b>COLORS</b>
<b>Surroundings (4 Books) Waterfall</b>	<b>Aqua / Teal</b>
<b>DESIGN TYPES</b>	<b>SCALE</b>
<b>Floral, Jacquard Pattern, Damask</b>	<b>Medium</b>
<b>DIRECTION SHOWN</b>	
<b>Up the Bolt</b>	



WIDTH	VERTICAL REPEAT	HORIZONTAL REPEAT	CONTENT
54.00 in (137.16 cm)	18.75 in (47.62 cm)	13.75 in (34.92 cm)	91% Polyester, 6% Cotton, 3% Linen
BACKING	DOUBLE RUBS	PRODUCT NUMBER	DATE BOOKED
	Exceeds 18,000 Double Rubs (Wyzenbeek Method)	4717001	09/2021
COUNTRY	CLEANING CODES		
India	S		

**ADDITIONAL PRODUCT NOTES**

Ca Tb 117-2013