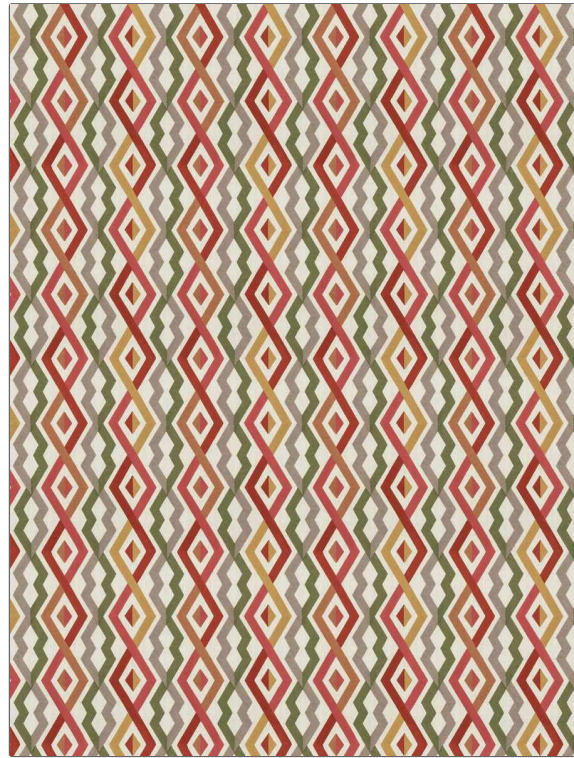


PATTERN	Community
COLOR	Spice
BRAND	APPLICATION
Fabricut	Fabric
USES	CATEGORIES
Bedding, Drapery	Crewels / Embroideries
BOOK	COLORS
Natural Home Terra Spice	Gold, Green, Orange / Spice
DESIGN TYPES	SCALE
Embroidery, Geometric, Lattice / Fretwork, Contemporary / Modern, Ogee, Diamond	Large
DIRECTION SHOWN	
Up the Bolt	



WIDTH	VERTICAL REPEAT	HORIZONTAL REPEAT	CONTENT
52.00 in (132.08 cm)	18.00 in (45.72 cm)	13.00 in (33.02 cm)	Embroidery: 100% Polyester, Base: 100% Linen
BACKING	PRODUCT NUMBER	DATE BOOKED	COUNTRY
	4735903	09/2021	India
CLEANING CODES			
S			

ADDITIONAL PRODUCT NOTES

Exclusive Pattern, Embroidered Textiles Are Not, Guaranteed For Precise Color, Matching And Colorfastness., Color Placement Of Embroidery, May Vary. All Measurements, Quoted For Repeats Are, Approximate.