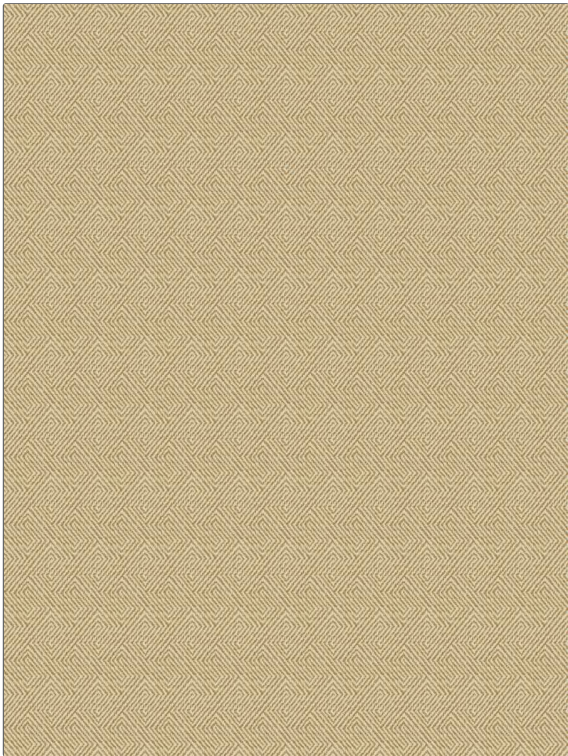


<b>PATTERN</b>	<b>Resting Point</b>
<b>COLOR</b>	<b>Wood Ash</b>
<b>BRAND</b>	<b>APPLICATION</b>
<b>Fabricut</b>	<b>Fabric</b>
<b>USES</b>	<b>CATEGORIES</b>
<b>Upholstery</b>	<b>Wovens</b>
<b>BOOK</b>	<b>COLORS</b>
<b>Natural Home Terra Spice</b>	<b>Brown, Off White / Ivory</b>
<b>DESIGN TYPES</b>	<b>SCALE</b>
<b>Geometric, Jacquard Pattern, Lattice / Fretwork, Small Scale Woven, Contemporary / Modern</b>	<b>Small</b>
<b>DIRECTION SHOWN</b>	
<b>Up the Bolt</b>	



<b>WIDTH</b>	<b>VERTICAL REPEAT</b>	<b>HORIZONTAL REPEAT</b>	<b>CONTENT</b>
<b>54.00 in (137.16 cm)</b>	<b>3.25 in (8.26 cm)</b>	<b>2.25 in (5.72 cm)</b>	<b>56% Cotton, 30% Viscose, 14% Polyester</b>
<b>BACKING</b>	<b>FIRE CODES</b>	<b>DOUBLE RUBS</b>	<b>PRODUCT NUMBER</b>
	<b>UFAC Class I / NFPA 260</b>	<b>Exceeds 36,000 Double Rubs (Wyzenbeek Method)</b>	<b>4739603</b>
<b>DATE BOOKED</b>	<b>COUNTRY</b>	<b>CLEANING CODES</b>	
<b>09/2021</b>	<b>Turkey</b>	<b>S</b>	

<b>ADDITIONAL PRODUCT NOTES</b>
<b>Ca Tb 117-2013, Exclusive Pattern</b>