

**PATTERN** Telluride  
**COLOR** Terra

**BRAND**  
**Fabricut**

**APPLICATION**  
**Fabric**

**USES**  
**Upholstery**

**CATEGORIES**  
**Wovens, Chenille**

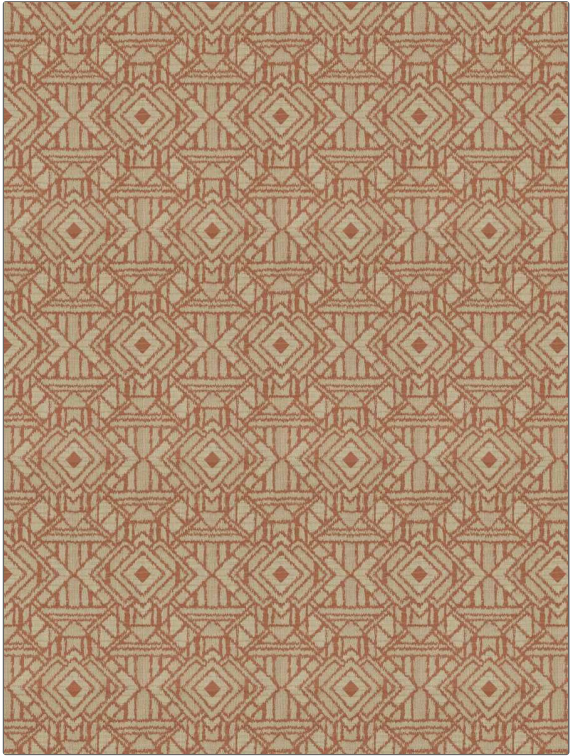
**BOOK**  
**Natural Home Terra Spice**

**COLORS**  
**Coral / Peach**

**DESIGN TYPES**  
**Global / Ethnic, Jacquard Pattern, Ogee, Diamond**

**SCALE**  
**Medium**

**DIRECTION SHOWN**  
**Up the Bolt**



WIDTH	VERTICAL REPEAT	HORIZONTAL REPEAT	CONTENT
54.00 in (137.16 cm)	23.00 in (58.42 cm)	13.25 in (33.66 cm)	60% Viscose, 20% Linen, 10% Cotton, 10% Polyester
BACKING	FIRE CODES	DOUBLE RUBS	PRODUCT NUMBER
	UFAC Class I / NFPA 260	Exceeds 15,000 Double Rubs (Wyzenbeek Method)	4760001
DATE BOOKED	COUNTRY	CLEANING CODES	
09/2021	India	S	

**ADDITIONAL PRODUCT NOTES**  
**Ca Tb 117-2013, Exclusive Pattern**