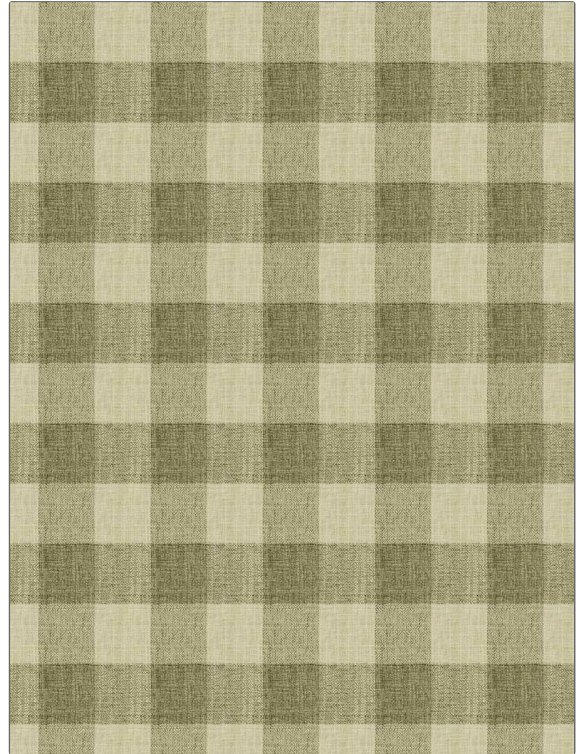


|  |                    |
|--|--------------------|
| <b>PATTERN</b>                         | <b>Namesake</b>    |
| <b>COLOR</b>                           | <b>Herbal</b>      |
| <b>BRAND</b>                           | <b>APPLICATION</b> |
| <b>Fabricut</b>                        | <b>Fabric</b>      |
| <b>USES</b>                            | <b>CATEGORIES</b>  |
| <b>Upholstery</b>                      | <b>Wovens</b>      |
| <b>BOOK</b>                            | <b>COLORS</b>      |
| <b>Natural Home Terra Spice</b>        | <b>Green</b>       |
| <b>DESIGN TYPES</b>                    | <b>SCALE</b>       |
| <b>Jacquard Pattern, Check / Plaid</b> | <b>Medium</b>      |
| <b>DIRECTION SHOWN</b>                 |                    |
| <b>Up the Bolt</b>                     |                    |



|                             |                                |  |                       |
|-----------------------------|--------------------------------|--|-----------------------|
| <b>WIDTH</b>                | <b>VERTICAL REPEAT</b>         | <b>HORIZONTAL REPEAT</b>                             | <b>CONTENT</b>        |
| <b>55.00 in (139.70 cm)</b> | <b>5.62 in (14.27 cm)</b>      | <b>5.37 in (13.64 cm)</b>                            | <b>100% Polyester</b> |
| <b>BACKING</b>              | <b>FIRE CODES</b>              | <b>DOUBLE RUBS</b>                                   | <b>PRODUCT NUMBER</b> |
|                             | <b>UFAC Class I / NFPA 260</b> | <b>Exceeds 30,000 Double Rubs (Wyzenbeek Method)</b> | <b>4864204</b>        |
| <b>DATE BOOKED</b>          | <b>COUNTRY</b>                 | <b>CLEANING CODES</b>                                |                       |
| <b>09/2021</b>              | <b>India</b>                   | <b>S</b>   |                       |

|  |
|--|
| <b>ADDITIONAL PRODUCT NOTES</b>          |
| <b>Ca Tb 117-2013, Exclusive Pattern</b> |