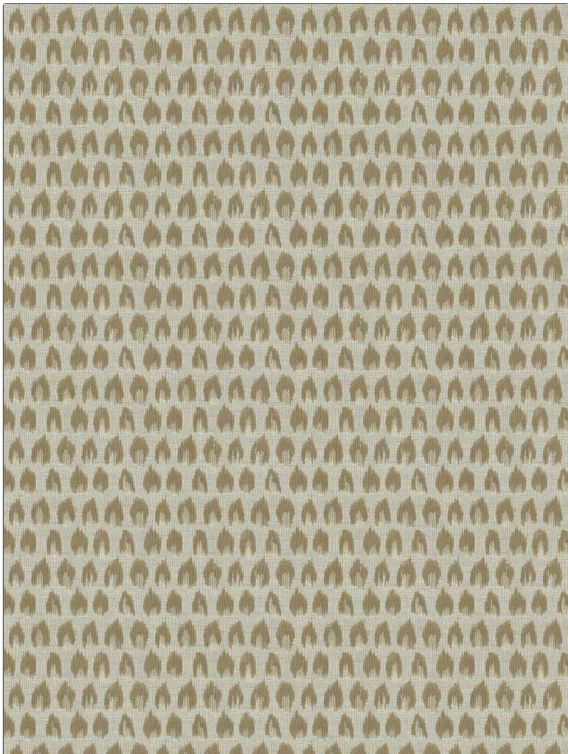


PATTERN	Spotted Ikat
COLOR	Tan
BRAND	APPLICATION
Fabricut	Fabric
USES	CATEGORIES
Bedding, Drapery, Multipurpose, Upholstery	Wovens, Faux Silk
BOOK	COLORS
Iris Apfel	Linen
DESIGN TYPES	SCALE
Global / Ethnic, Print Pattern, Animal Skins	Small
DIRECTION SHOWN	
Up the Bolt	



WIDTH	VERTICAL REPEAT	HORIZONTAL REPEAT	CONTENT
54.00 in (137.16 cm)	7.00 in (17.78 cm)	6.00 in (15.24 cm)	70% Polyester, 30% Viscose
BACKING	FIRE CODES	DOUBLE RUBS	PRODUCT NUMBER
	UFAC Class I / NFPA 260	Exceeds 12,000 Double Rubs (Wyzenbeek Method)	4951903
DATE BOOKED	COUNTRY	CLEANING CODES	
07/2021	Turkey	S	

ADDITIONAL PRODUCT NOTES
Ca Tb 117-2013, Exclusive Pattern