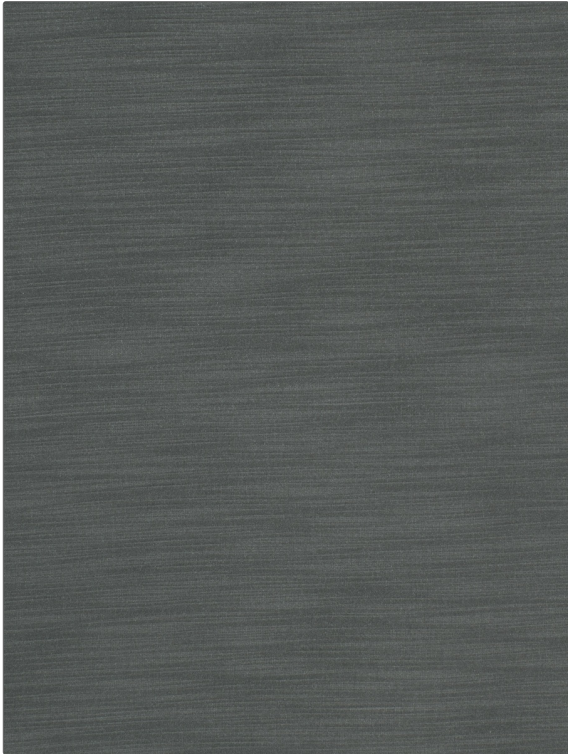


**PATTERN** Monarch Satin  
**COLOR** 08



|                                       |   |
|---------------------------------------|---|
| <b>BRAND</b>                          | <b>APPLICATION</b>                              |
| <b>Fabricut</b>                       | <b>Fabric</b>                                   |
| <b>USES</b>                           | <b>CATEGORIES</b>                               |
| <b>Bedding, Drapery, Multipurpose</b> | <b>Solids / Small Scale Patterns, Faux Silk</b> |
| <b>COLORS</b>                         | <b>DESIGN TYPES</b>                             |
| <b>Taupe / Tan</b>                    | <b>Solid</b>                                    |
| <b>DIRECTION SHOWN</b>                |   |
| <b>Up the Bolt</b>                    |   |

|                      |   |   |                           |
|----------------------|---|---|---------------------------|
| <b>WIDTH</b>         | <b>VERTICAL REPEAT</b>                  | <b>HORIZONTAL REPEAT</b>                      | <b>CONTENT</b>            |
| 54.00 in (137.16 cm) | 0.00 in (0.00 cm)                       | 0.00 in (0.00 cm)                             | 60% Cotton, 40% Polyester |
| <b>BACKING</b>       | <b>FIRE CODES</b>                       | <b>DOUBLE RUBS</b>                            | <b>PRODUCT NUMBER</b>     |
|                      | UFAC Class I / NFPA 260, Passes MVS 302 | Exceeds 85,000 Double Rubs (Wyzenbeek Method) | 5289308                   |
| <b>COUNTRY</b>       | <b>CLEANING CODES</b>                   |   |                           |
| India                | S                                       |   |                           |

**ADDITIONAL PRODUCT NOTES**

Oeko Tex Standard 100, Iso 14001, Ca Tb 117-2013, Exclusive Pattern, Eco / Environment Plus