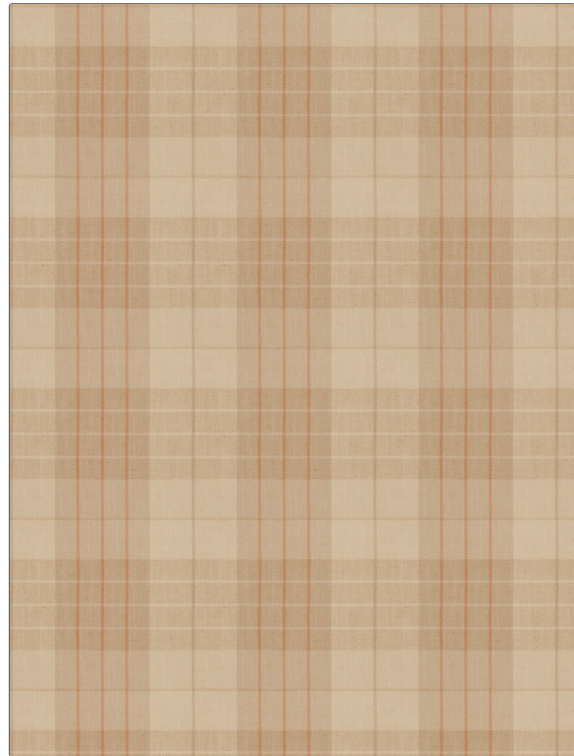


**PATTERN** Dalton  
**COLOR** Coral

<b>BRAND</b>	<b>APPLICATION</b>
Fabricut	Fabric
<b>USES</b>	<b>CATEGORIES</b>
Bedding, Drapery, Multipurpose	Wovens
<b>COLORS</b>	<b>DESIGN TYPES</b>
Coral / Peach	Check / Plaid
<b>SCALE</b>	<b>DIRECTION SHOWN</b>
Medium	Up the Bolt



<b>WIDTH</b>	<b>VERTICAL REPEAT</b>	<b>HORIZONTAL REPEAT</b>	<b>CONTENT</b>
55.00 in (139.70 cm)	8.50 in (21.59 cm)	8.75 in (22.22 cm)	53% Polyester, 29% Linen, 18% Cotton
<b>BACKING</b>	<b>FIRE CODES</b>	<b>DOUBLE RUBS</b>	<b>PRODUCT NUMBER</b>
	UFAC Class I / NFPA 260	Exceeds 21,000 Double Rubs (Wyzenbeek Method)	5852501
<b>COUNTRY</b>	<b>CLEANING CODES</b>		
China	S		

**ADDITIONAL PRODUCT NOTES**

Ca Tb 117-2013, Exclusive Pattern