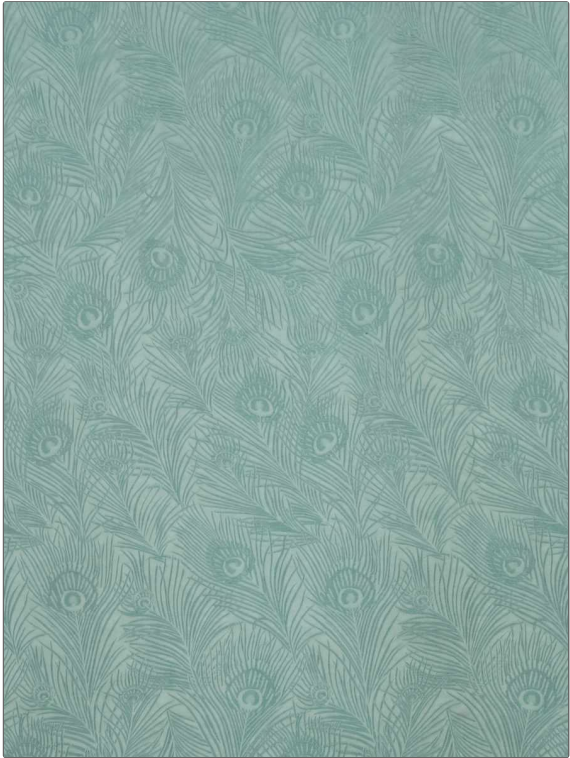


PATTERN Hera Plume
COLOR Salvia

BRAND	APPLICATION
Liberty of London	Fabric
USES	CATEGORIES
Bedding, Drapery, Multipurpose, Upholstery	Wovens, Linen
BOOK	COLORS
LOL Modern Coll Art Nouveau & tree Of Life	Aqua / Teal
DESIGN TYPES	SCALE
Tropical / Botanical	Large
RAILROADED	
Not Railroaded	



WIDTH	VERTICAL REPEAT	HORIZONTAL REPEAT	CONTENT
56.00 in (142.24 cm)	29.10 in (73.91 cm)	13.70 in (34.80 cm)	56% Linen, 44% Viscose
BACKING	FIRE CODES	DOUBLE RUBS	PRODUCT NUMBER
	UFAC Class I / NFPA 260	Exceeds 30,000 Double Rubs (Wyzenbeek Method)	5971705
DATE BOOKED	COUNTRY	CLEANING CODES	
05/2021	Italy	S	

ADDITIONAL PRODUCT NOTES
 Passes 20,000 Martindale Tst, Exclusive Pattern