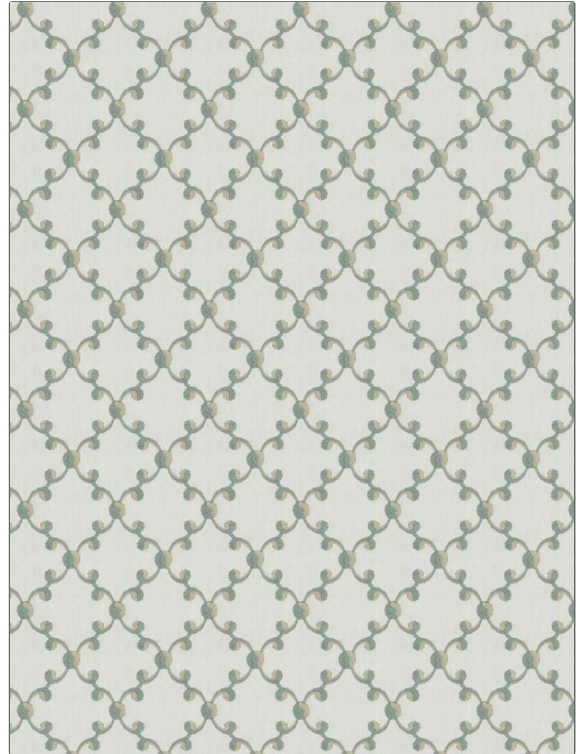


**PATTERN** Morisette  
**COLOR** La Mer

|   |                          |
|---|--------------------------|
| <b>BRAND</b>  | <b>APPLICATION</b>       |
| Fabricut  | Fabric                   |
| <b>USES</b>   | <b>CATEGORIES</b>        |
| Bedding, Drapery                                    | Crewels / Embroideries   |
| <b>BOOK</b>   | <b>COLORS</b>            |
| French General Jardin                               | Aqua / Teal, Light Green |
| <b>DESIGN TYPES</b>                                 | <b>SCALE</b>             |
| Embroidery, Lattice / Fretwork, Scrollwork, Diamond | Medium                   |
| <b>DIRECTION SHOWN</b>                              |                          |
| Up the Bolt   |                          |



|                       |                        |                          |  |
|-----------------------|------------------------|--------------------------|--|
| <b>WIDTH</b>          | <b>VERTICAL REPEAT</b> | <b>HORIZONTAL REPEAT</b> | <b>CONTENT</b>   |
| 52.00 in (132.08 cm)  | 4.75 in (12.06 cm)     | 4.38 in (11.13 cm)       | Embroidery: 100% Viscose,<br>Base: 50% Polyester, 50% Cotton |
| <b>BACKING</b>        | <b>PRODUCT NUMBER</b>  | <b>DATE BOOKED</b>       | <b>COUNTRY</b>   |
|                       | 6065107                | 07/2022                  | India  |
| <b>CLEANING CODES</b> |                        |                          |  |
| S                     |                        |                          |  |

**ADDITIONAL PRODUCT NOTES**

Exclusive Pattern, Embroidered Textiles Are Not, Guaranteed For Precise Color, Matching And Colorfastness., Color Placement Of Embroidery, May Vary. All Measurements, Quoted For Repeats Are, Approximate.