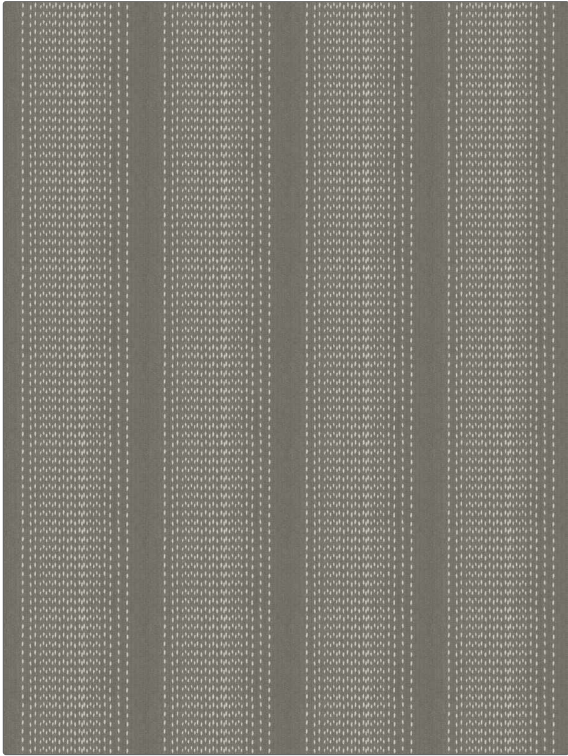


PATTERN Maribel Stripe
COLOR Charcoal

BRAND	APPLICATION
Fabricut	Fabric
USES	CATEGORIES
Bedding, Drapery, Multipurpose, Upholstery	Wovens
BOOK	COLORS
French General Linen	Grey
DESIGN TYPES	SCALE
Stripes	Medium
DIRECTION SHOWN	
Up the Bolt	



WIDTH	VERTICAL REPEAT	HORIZONTAL REPEAT	CONTENT
54.00 in (137.16 cm)	0.00 in (0.00 cm)	6.75 in (17.14 cm)	100% Cotton
BACKING	FIRE CODES	DOUBLE RUBS	PRODUCT NUMBER
	UFAC Class I / NFPA 260	Exceeds 36,000 Double Rubs (Wyzenbeek Method)	6065304
DATE BOOKED	COUNTRY	CLEANING CODES	
07/2022	China	S	

ADDITIONAL PRODUCT NOTES

Ca Tb 117-2013, Exclusive Pattern