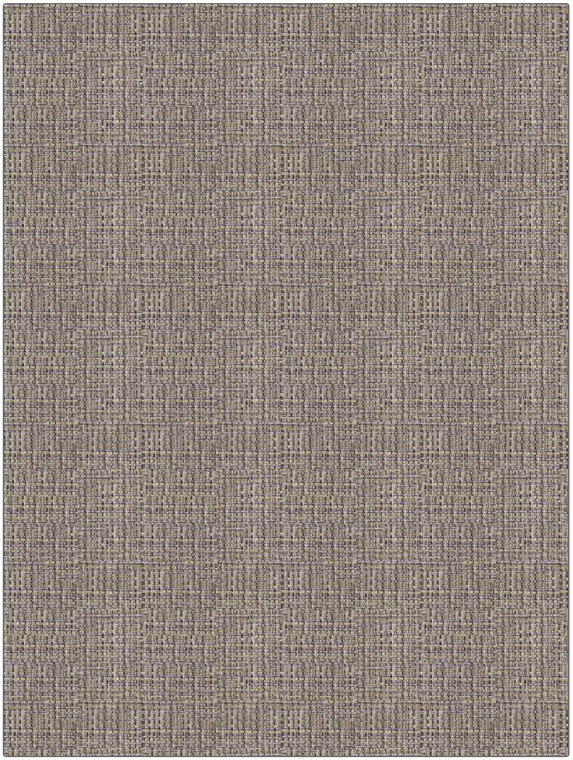


**PATTERN** Rockland  
**COLOR** Baroque

<b>BRAND</b>	<b>APPLICATION</b>
Fabricut	Fabric
<b>USES</b>	<b>CATEGORIES</b>
Upholstery	Easy To Clean, Fibreguard, Wovens, Solids / Small Scale Patterns
<b>BOOK</b>	<b>COLORS</b>
Fibreguard Performance By Color Flint	Lavender / Purple, Taupe / Tan
<b>DESIGN TYPES</b>	<b>SCALE</b>
Small Scale Woven, Texture Plain	Small
<b>DIRECTION SHOWN</b>	
Up the Bolt	



<b>WIDTH</b>	<b>FINISH</b>	<b>VERTICAL REPEAT</b>	<b>HORIZONTAL REPEAT</b>
55.00 in (139.70 cm)	Fibreguard	0.00 in (0.00 cm)	0.00 in (0.00 cm)
<b>CONTENT</b>	<b>BACKING</b>	<b>FIRE CODES</b>	<b>DOUBLE RUBS</b>
51% Polyester, 49% Acrylic	100% Acrylic Backing	UFAC Class I / NFPA 260, Passes MVS 302	Exceeds 40,000 Double Rubs (Wyzenbeek Method)
<b>PRODUCT NUMBER</b>	<b>DATE BOOKED</b>	<b>COUNTRY</b>	<b>CLEANING CODES</b>
6114030	03/2022	Turkey	WW

**ADDITIONAL PRODUCT NOTES**

Fibreguard, Pfas-Free, Passes 80,000 Martindale Tst, Oeko Tex Standard 100, Iso 14001, Ca Tb 117-2013, 100% Acrylic Backing, Exclusive Pattern, Eco / Environment Plus