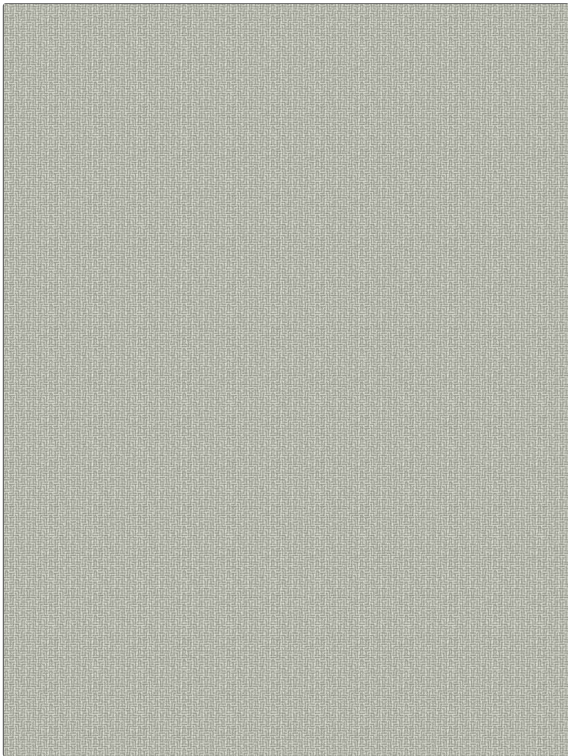


**PATTERN** Boosters  
**COLOR** 05

|   |  |
|---|--|
| <b>BRAND</b>                                  | <b>APPLICATION</b>   |
| Fabricut                                      | Fabric   |
| <b>USES</b>                                   | <b>CATEGORIES</b>  |
| Bedding, Drapery,<br>Multipurpose, Upholstery | Wovens, Chenille   |
| <b>COLORS</b>                                 | <b>DESIGN TYPES</b>  |
| Light Blue, Aqua / Teal                       | Geometric, Herringbone,<br>Texture Plain,<br>Contemporary / Modern |
| <b>SCALE</b>                                  | <b>DIRECTION SHOWN</b>   |
| Small   | Up the Bolt  |



|                      |                        |  |                       |
|----------------------|------------------------|--|-----------------------|
| <b>WIDTH</b>         | <b>VERTICAL REPEAT</b> | <b>HORIZONTAL REPEAT</b>                         | <b>CONTENT</b>        |
| 55.00 in (139.70 cm) | 0.50 in (1.27 cm)      | 0.50 in (1.27 cm)                                | 100% Polyester        |
| <b>BACKING</b>       | <b>FIRE CODES</b>      | <b>DOUBLE RUBS</b>                               | <b>PRODUCT NUMBER</b> |
|                      | UFAC Class I           | Exceeds 50,000 Double<br>Rubs (Wyzenbeek Method) | 6120905               |
| <b>COUNTRY</b>       | <b>CLEANING CODES</b>  |  |                       |
| India                | S                      |  |                       |

**ADDITIONAL PRODUCT NOTES**

Ca Tb 117-2013