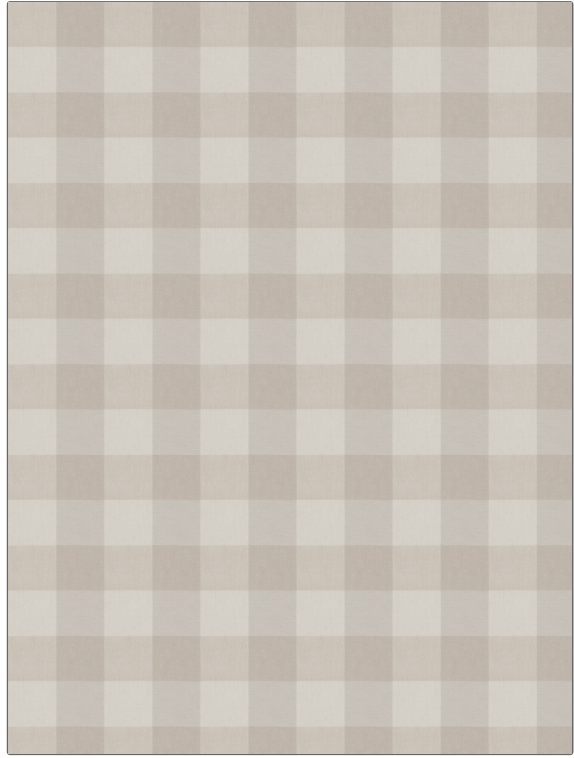


| | |
|---------------------------------------|---------------------------------------|
| PATTERN | Turbo Check |
| COLOR | Dune |
| BRAND | APPLICATION |
| Fabricut | Fabric |
| USES | CATEGORIES |
| Bedding, Drapery, Multipurpose | Wovens |
| BOOK | COLORS |
| Avalon Lane | Grey, Linen, Off White / Ivory |
| DESIGN TYPES | SCALE |
| Check / Plaid | Medium |
| DIRECTION SHOWN | |
| Up the Bolt | |



| | | | |
|-----------------------------|---------------------------|--|-----------------------|
| WIDTH | VERTICAL REPEAT | HORIZONTAL REPEAT | CONTENT |
| 54.00 in (137.16 cm) | 4.37 in (11.10 cm) | 4.62 in (11.73 cm) | 100% Cotton |
| BACKING | FIRE CODES | DOUBLE RUBS | PRODUCT NUMBER |
| | UFAC Class I | Exceeds 51,000 Double Rubs (Wyzenbeek Method) | 6429001 |
| DATE BOOKED | COUNTRY | CLEANING CODES | |
| 11/2022 | Portugal | S | |

| |
|---------------------------------|
| ADDITIONAL PRODUCT NOTES |
| Ca Tb 117-2013 |