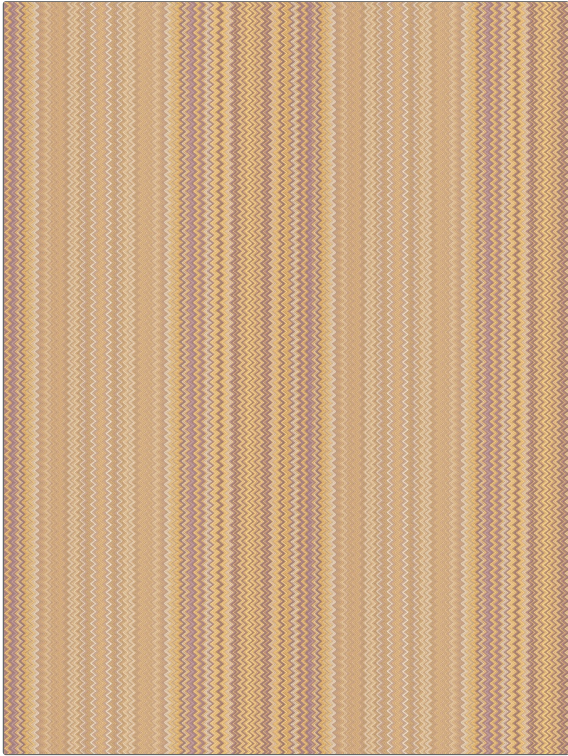


FABRICUT[®] Fabric Product Details

PATTERN	Halma
COLOR	Parma

BRAND	APPLICATION
Fabricut	Fabric
USES	CATEGORIES
Bedding, Drapery, Multipurpose	NFPA 701 FR, Wovens
COLORS	DESIGN TYPES
Lavender / Purple, Taupe / Tan, Coral / Peach	Stripes
SCALE	DIRECTION SHOWN
Medium	Up the Bolt



WIDTH	VERTICAL REPEAT	HORIZONTAL REPEAT	CONTENT
57.00 in (144.78 cm)	0.37 in (0.94 cm)	14.25 in (36.20 cm)	100% Polyester
BACKING	FIRE CODES	DOUBLE RUBS	PRODUCT NUMBER
	UFAC Class I / NFPA 260, Passes "NFPA 701" 2010	Exceeds 65,000 Double Rubs (Wyzenbeek Method)	6514005
COUNTRY	CLEANING CODES		
India	S		

ADDITIONAL PRODUCT NOTES
Oeko Tex Standard 100, Exclusive Pattern, Eco / Environment Plus